

# Art



MASSACHUSETTS BAY TRANSPORTATION AUTHORITY

## **CHELSEA** COMMUTER RAIL STATION

# **SILVER LINE EXTENSION**

## PHASE 2

# AGENDA

## INTEGRAL ART COMMUNITY FORUM

- INTRODUCTIONS
- MBTA INTEGRAL ART PROGRAM
- PORCELAIN ENAMEL PANEL OPPORTUNITIES
- CHELSEA COMMUTER RAIL STATION PROJECT
- THE 11 SEMI-FINALISTS
- Q&A

# INTEGRATED ART



# CHELSEA COMMUTER RAIL STATION

## INTEGRAL ART PROJECT

- Commission art for porcelain enamel panels
- fabricated and installed by the contractor
- Artist works with the design team and contractor
- Selection committee may choose a single artist or multiple artists
- Total art enrichment budget: 0.5% of station cost (\$14,000,000)
- Up to four artists will be selected
- Each of four artists would receive a stipend of up to \$17,500



# MBTA INTEGRAL ART PROGRAM/POLICY

MBTA identifies opportunities for integral art that leverages the value of built elements.

Include *only* enhancements to elements required for the construction of the facility.

Artists will use the materials of the system, such as porcelain enamel, ceramic tile, bronze, steel, glass and concrete.

Designs will meet the same quality, craftsmanship and maintenance standards as the underlying element. Safety, accessibility, durability and maintenance requirements are the same as required elements.

Impact on the public will be optimized, and the product must enhance a positive and welcoming environment to the public.

# INTEGRATED ART

## OPPORTUNITIES FOR PORCELAIN ENAMEL PANELS





## CHELSEA COMMUTER RAIL STATION AREAS FOR PORCELAIN ENAMEL ART PANELS



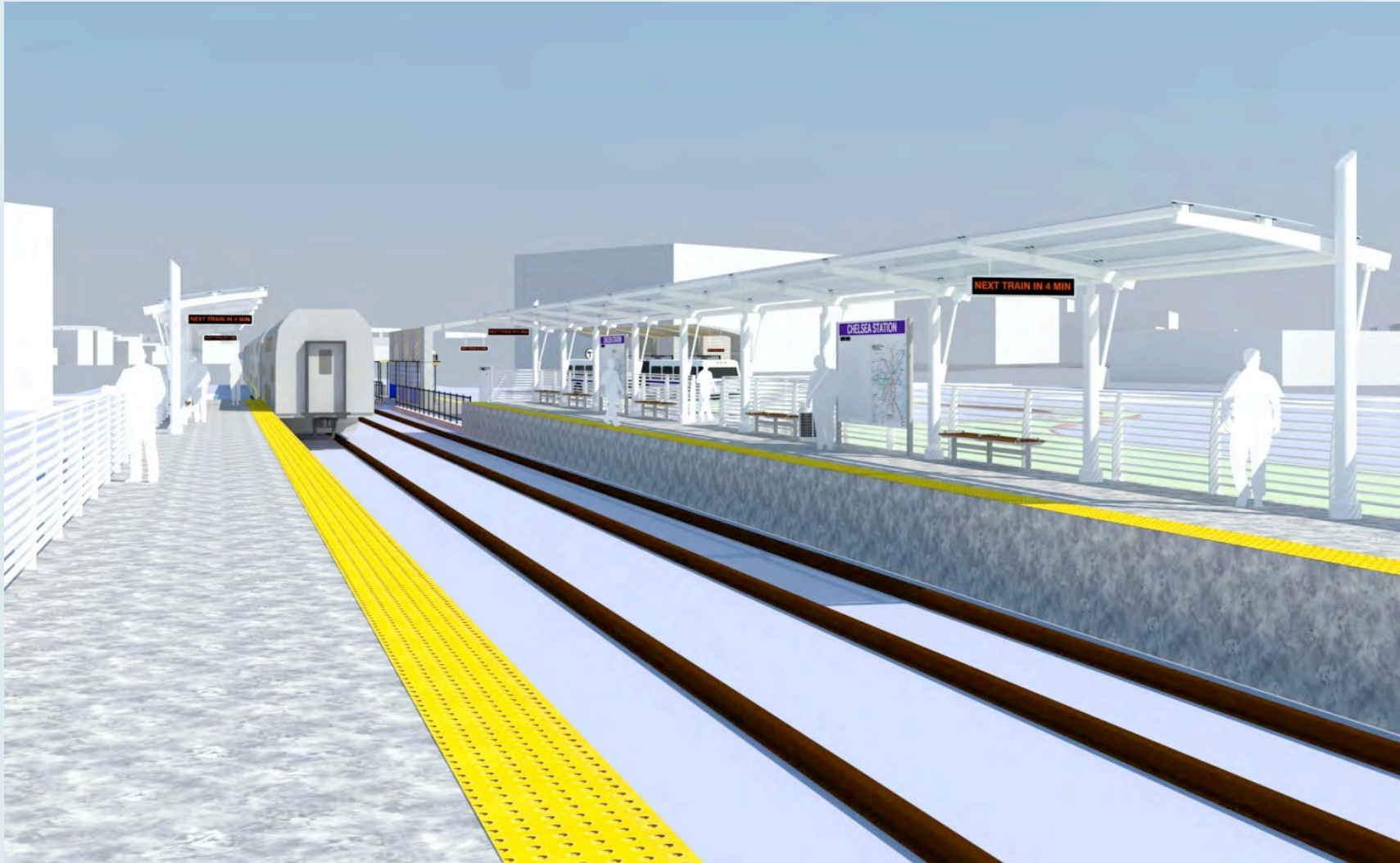


# CHELSEA COMMUTER RAIL STATION RELOCATION PLAN



# CHELSEA COMMUTER RAIL STATION DESIGN

## SIDE PLATFORM







## SILVER LINE GATEWAY PROJECT OVERALL STUDY AREA



# CURRENT PROCUREMENT SCHEDULE

## IMPORTANT DATES

Friday July 17, 2015	RFQ release date
Wednesday, July 29, 2015	Information session, 6:00 - 7:00 PM
Wednesday, August 5, 2015	Due date for questions on RFQ
Monday, August 24 at 11:59 PM	Application deadline
September 2015	Application review/finalists notified
October - November 2015	Community dialogues/forums
November 2015	Artists selection finalized
TBD	Selected artists are notified
November – March 2016	Artist engagement & design process
TBD	Execution and installation

# The 11 Semi-Finalist Artists

Silvia Chavez-Lopez

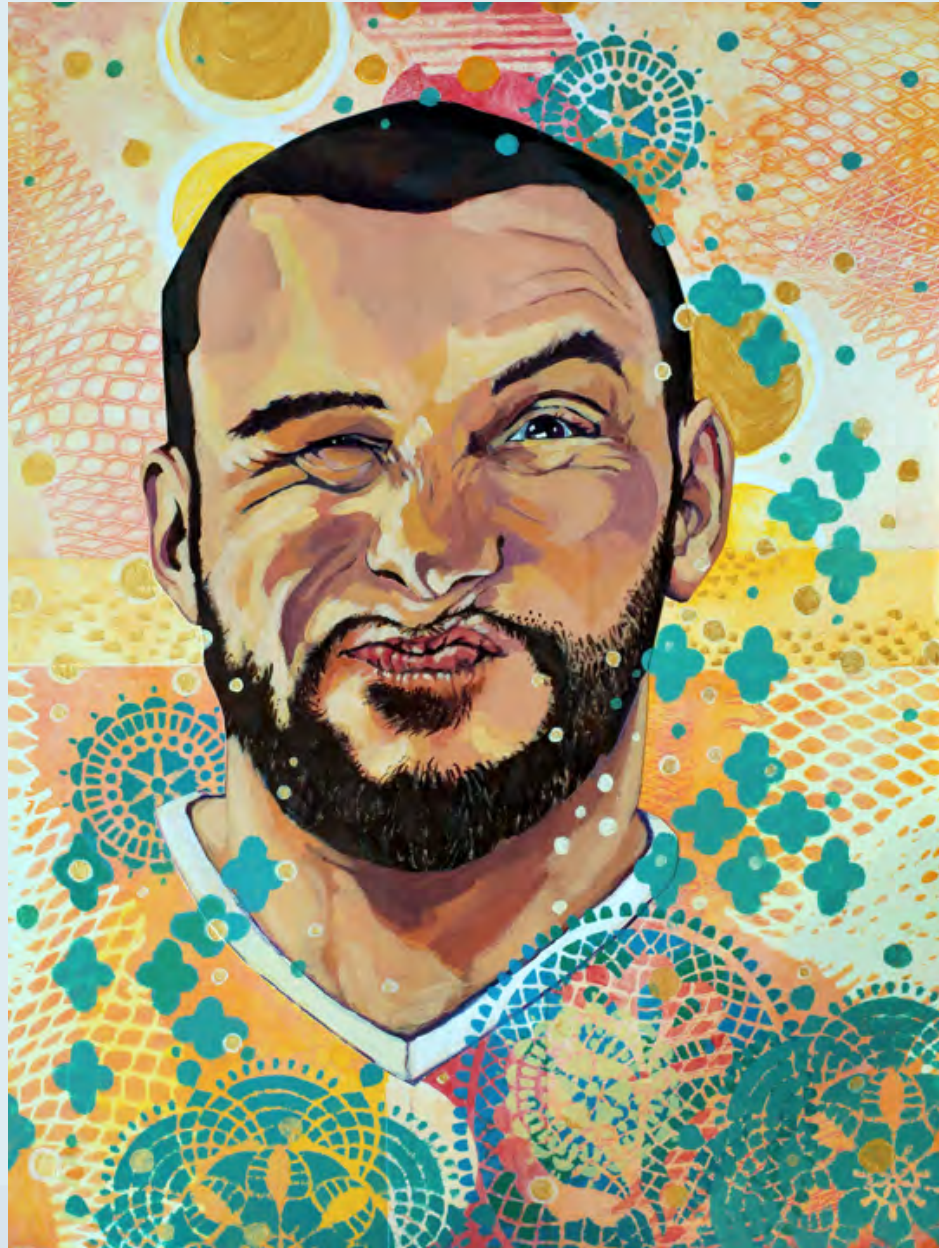


# Silvia Chavez-Lopez





# Silvia Chavez-Lopez



# Silvia Chavez-Lopez





# Silvia Chavez-Lopez



# Silvia Chavez-Lopez





# Silvia Chavez-Lopez

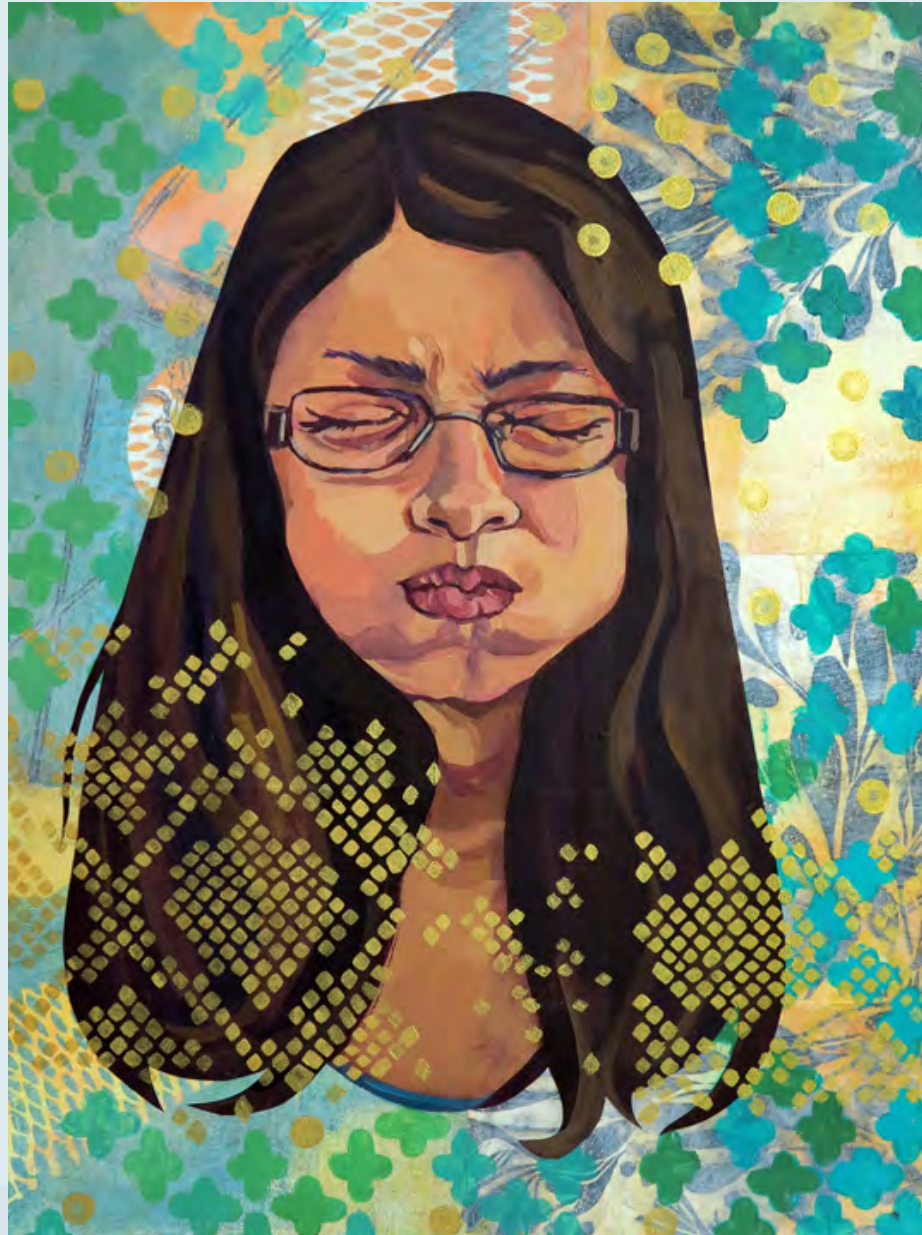




# Silvia Chavez-Lopez



# Silvia Chavez-Lopez

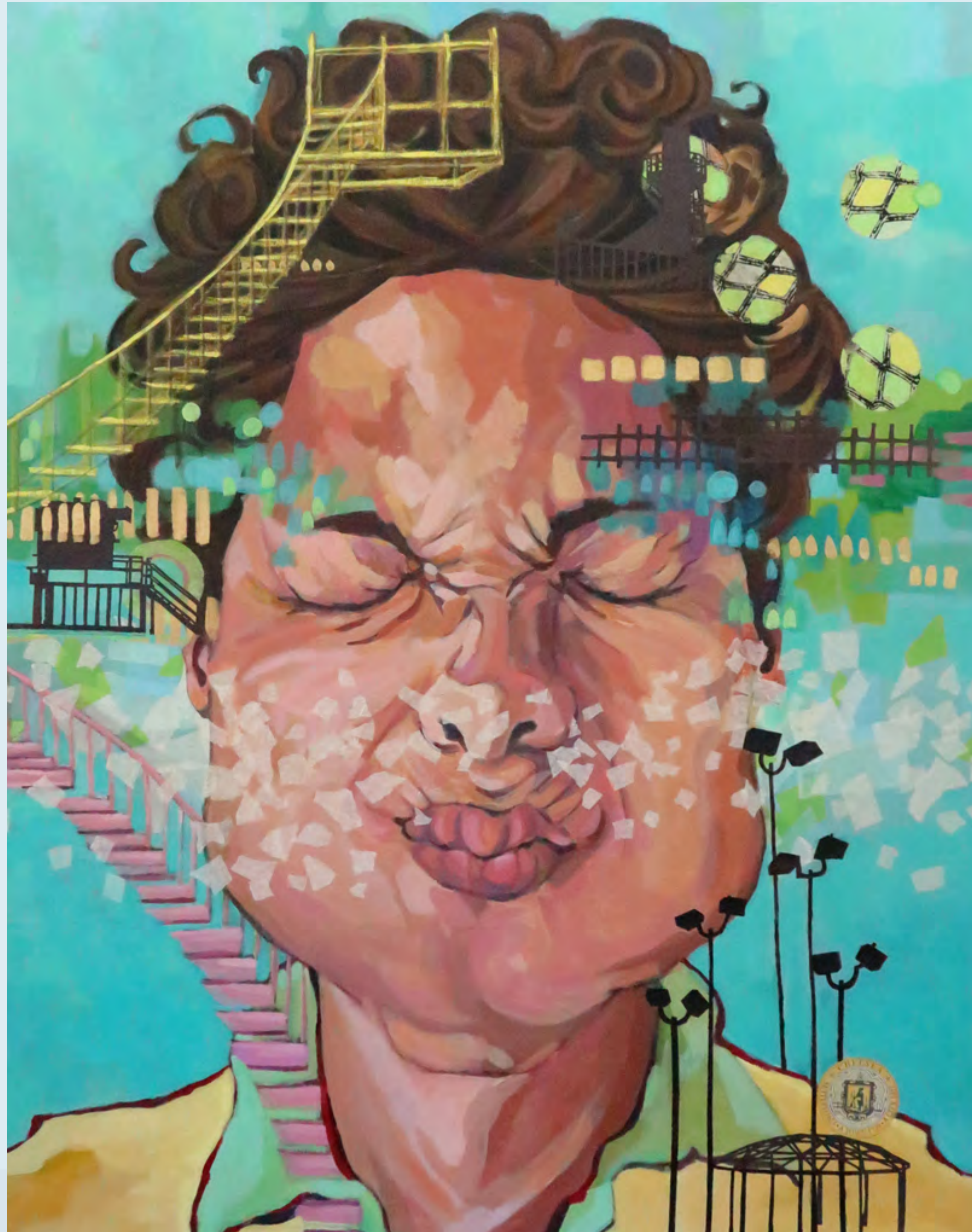




# Silvia Chavez-Lopez



# Silvia Chavez-Lopez



Amy Cheng



# Amy Cheng





# Amy Cheng





# Amy Cheng





# Amy Cheng



# Amy Cheng



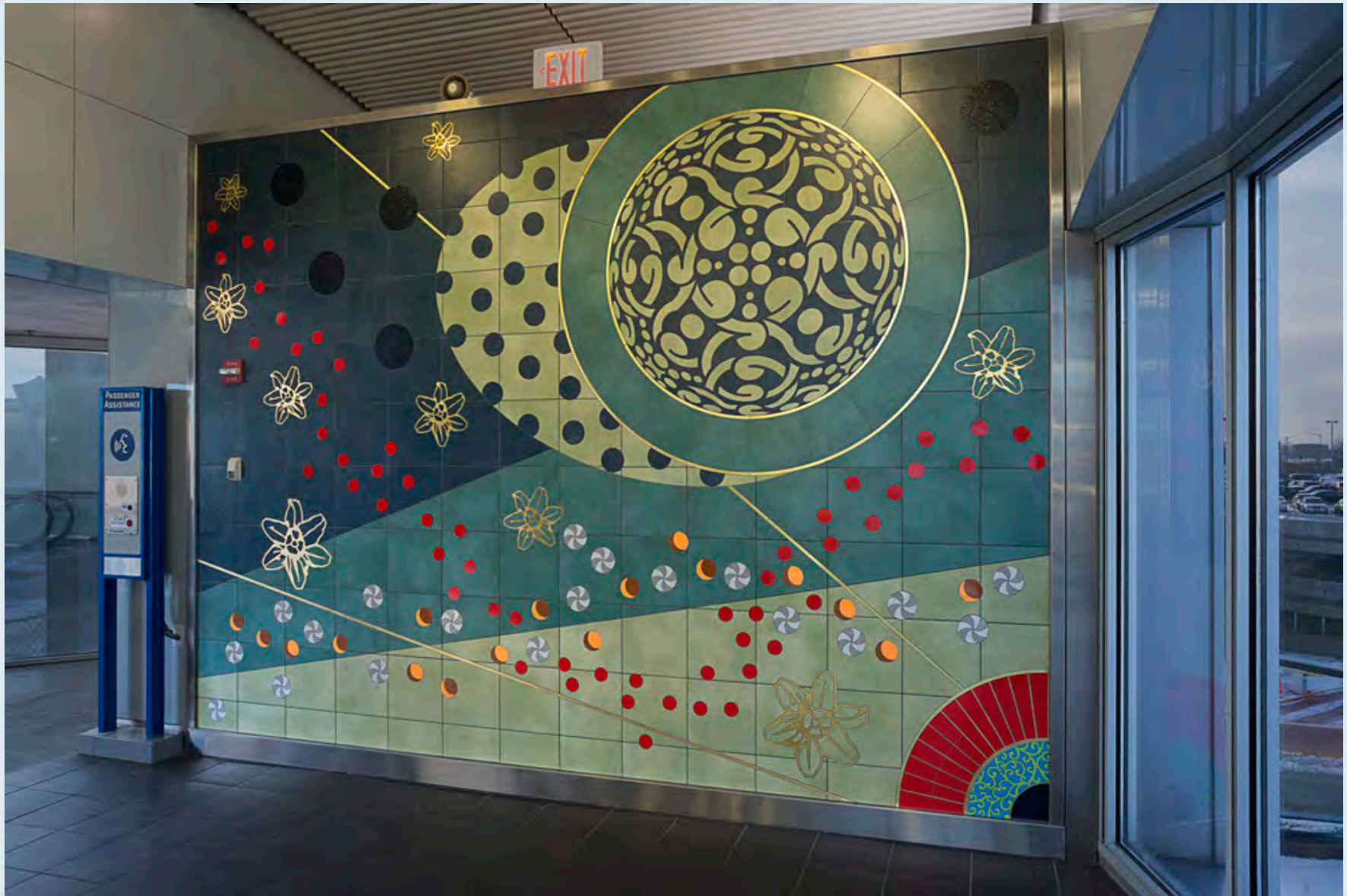


# Amy Cheng





# Amy Cheng





# Amy Cheng



# Amy Cheng





# Amy Cheng



Ellen Driscoll



# Ellen Driscoll

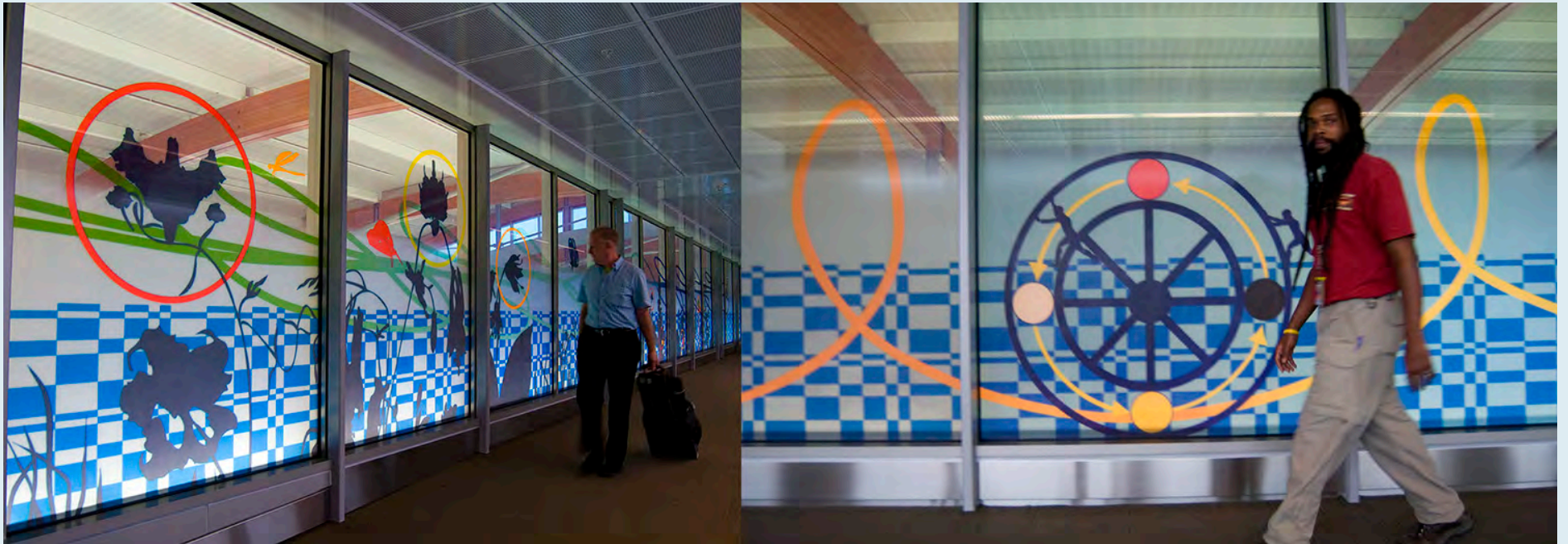




# Ellen Driscoll



# Ellen Driscoll

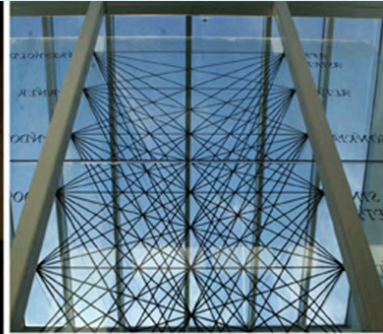




# Ellen Driscoll

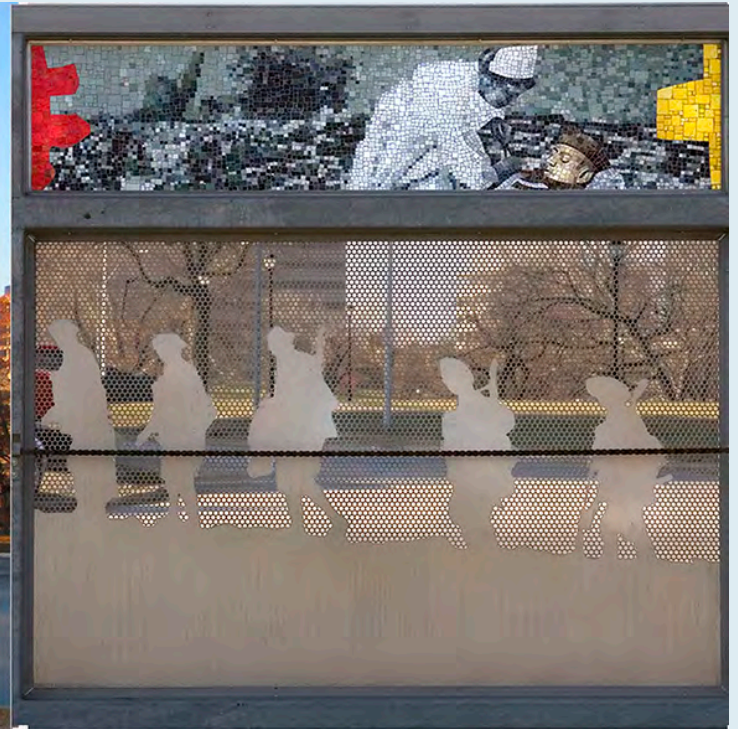


# Ellen Driscoll

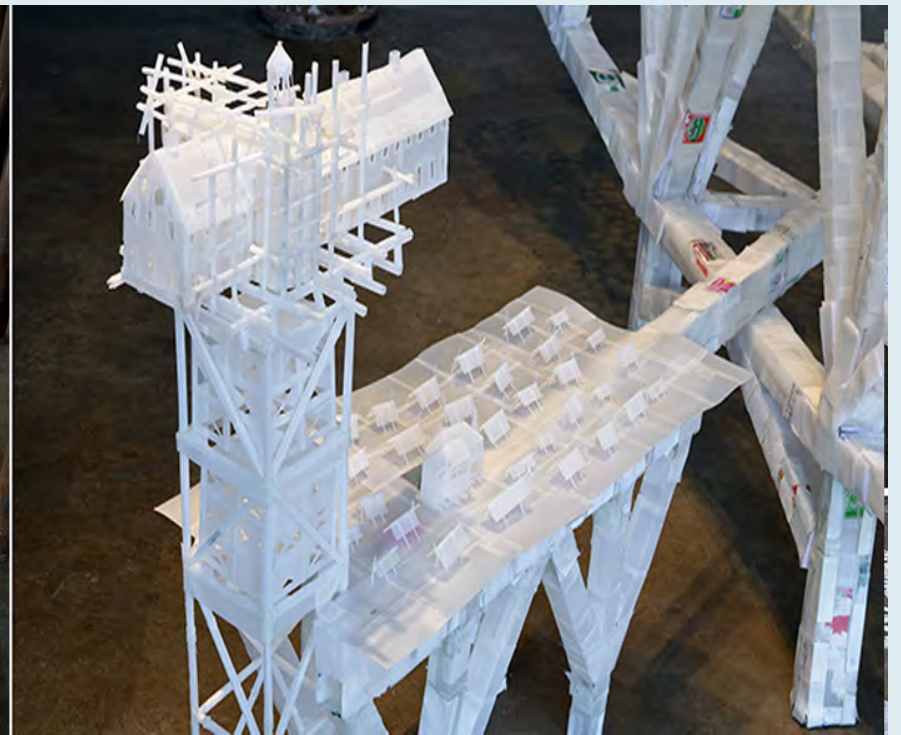




# Ellen Driscoll

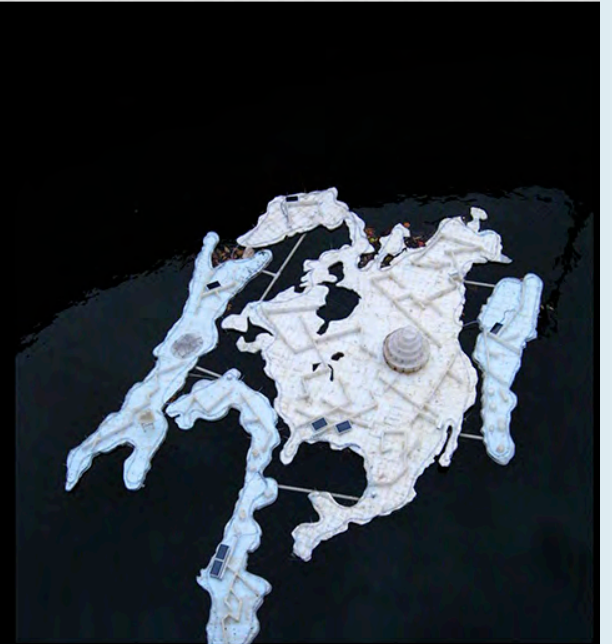


# Ellen Driscoll





# Ellen Driscoll



# Ellen Driscoll





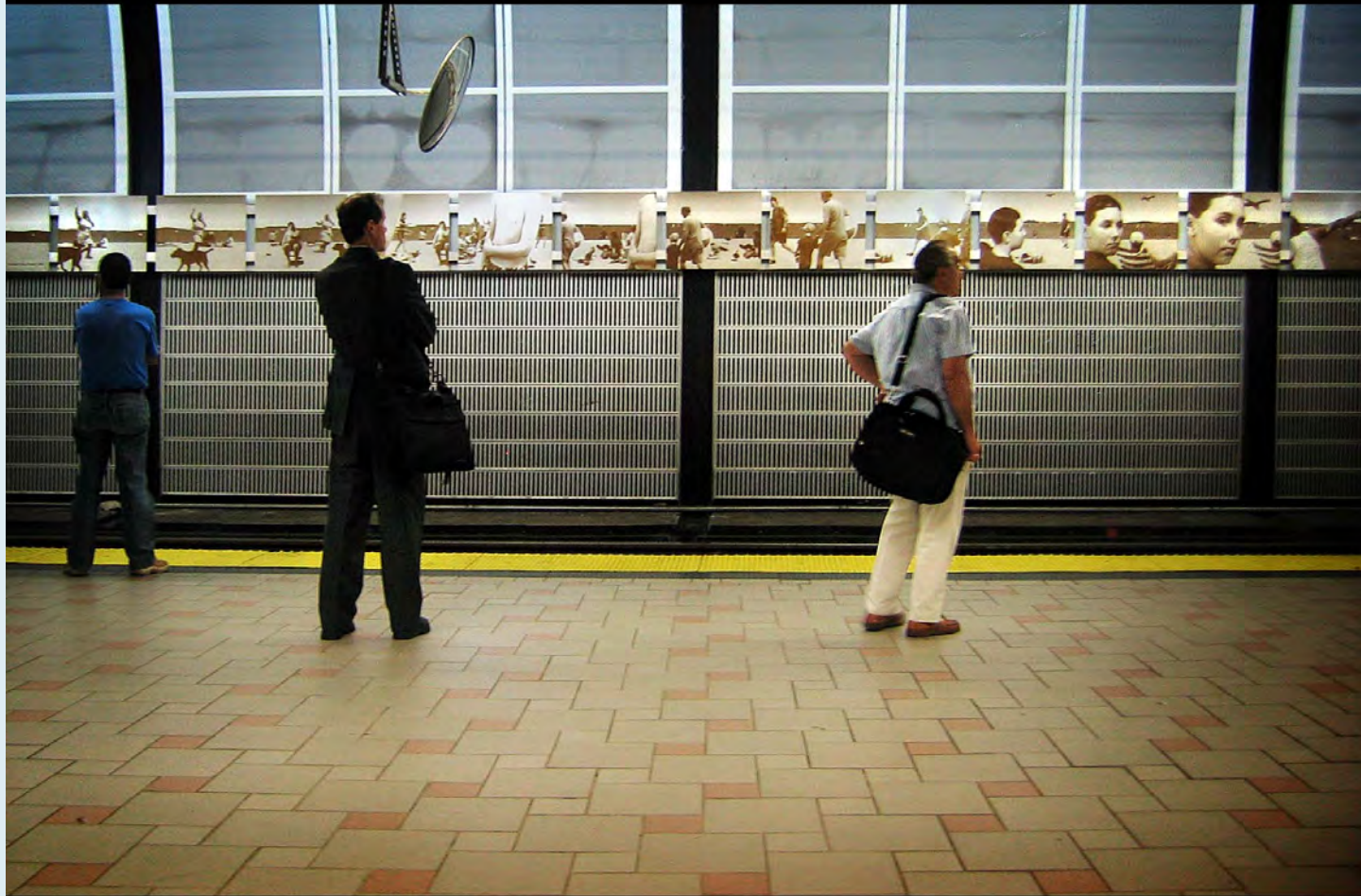
# Ellen Driscoll



Gary Duehr



# Gary Duehr



# Gary Duehr





# Gary Duehr



# Gary Duehr





# Gary Duehr





# Gary Duehr





# Gary Duehr





# Gary Duehr





# Gary Duehr



# Gary Duehr





Leigh Hall

# Leigh Hall





# Leigh Hall



# Leigh Hall





# Leigh Hall





# Leigh Hall





# Leigh Hall





# Leigh Hall





# Leigh Hall



# Leigh Hall





Elisa Hamilton

# Elisa Hamilton





# Elisa Hamilton





# Elisa Hamilton





# Elisa Hamilton





# Elisa Hamilton





# Elisa Hamilton





# Elisa Hamilton





# Elisa Hamilton



# Elisa Hamilton





# Elisa Hamilton



Lisa Houck



# Lisa Houck





# Lisa Houck





# Lisa Houck





# Lisa Houck





# Lisa Houck



# Lisa Houck





# Lisa Houck





# Lisa Houck





# Lisa Houck



# Lisa Houck





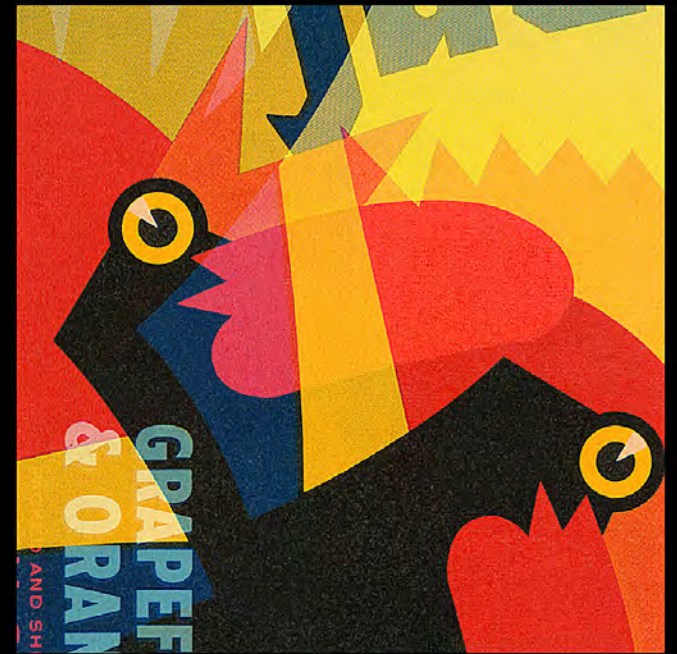
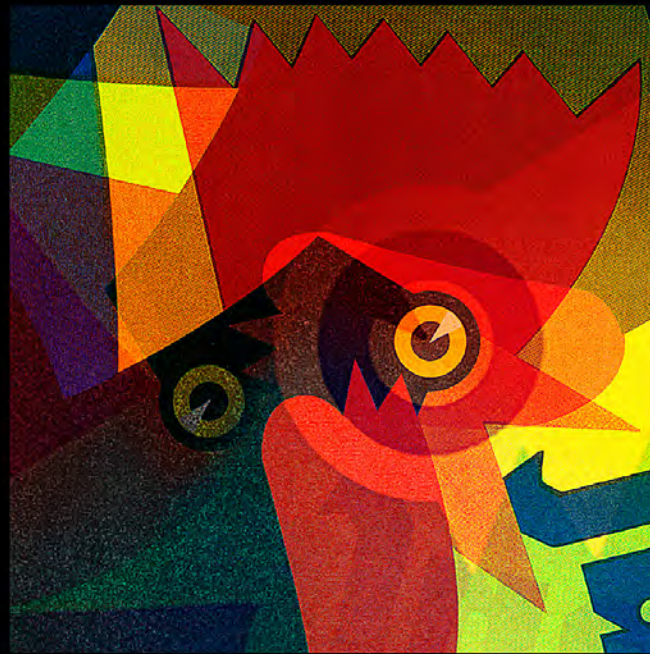
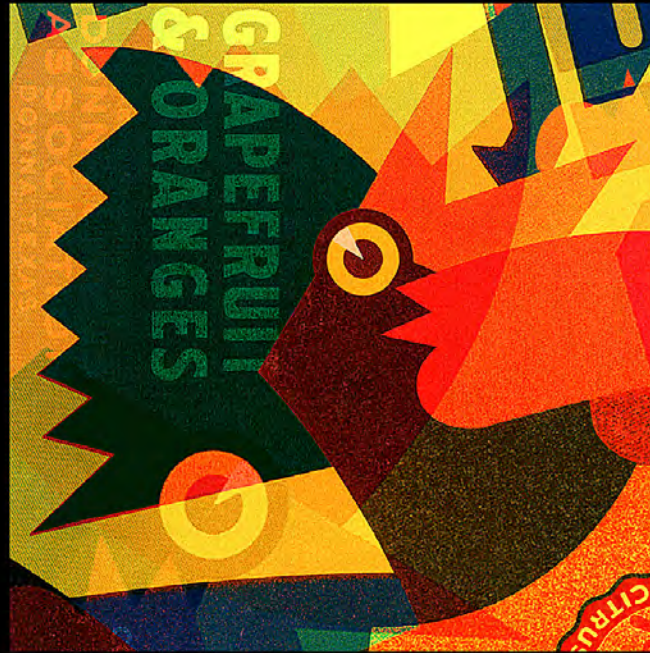
**Joanne Kaliontzis**

# Joanne Kaliontzis





# Joanne Kaliontzis



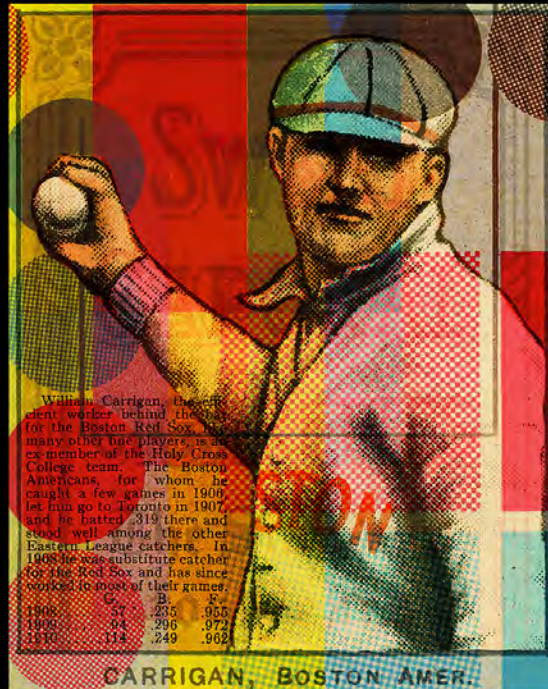


# Joanne Kaliontzis





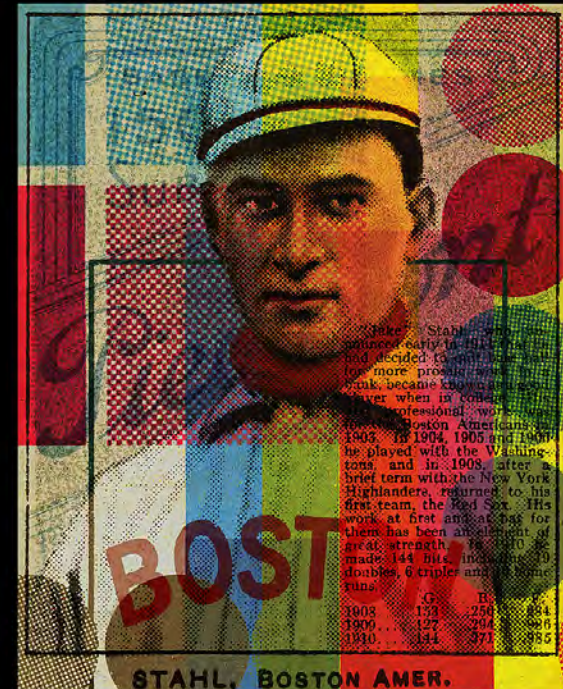
# Joanne Kaliontzis



William Carrigan, the efficient worker behind the bat for the Boston Red Sox, has many other fine players, is an ex-member of the Holy Cross College team. The Boston Americans, for whom he caught a few games in 1906, let him go to Toronto in 1907, and he batted .319 there and stood well among the other Eastern League catchers. In 1908 he was substitute catcher for the Red Sox and has since worked in most of their games.

	G.	B.	R.
1906	35	235	955
1908	94	296	972
1910	114	249	962

CARRIGAN, BOSTON AMER.



Jake Stahl, who announced early in his career that he had decided to quit baseball for more promising work, came back because of a financial crisis when in college. His professional work was for the Boston Americans in 1903. In 1904, 1905 and 1906 he played with the Washingtons and in 1908, after a brief term with the New York Highlanders, returned to his first team, the Red Sox. His work at first and at bat for them has been an excellent one; in 1910 he made 144 hits, including 19 doubles, 6 triples and 8 home runs.

	G.	B.	R.
1903	130	254	834
1909	127	204	866
1910	144	371	855

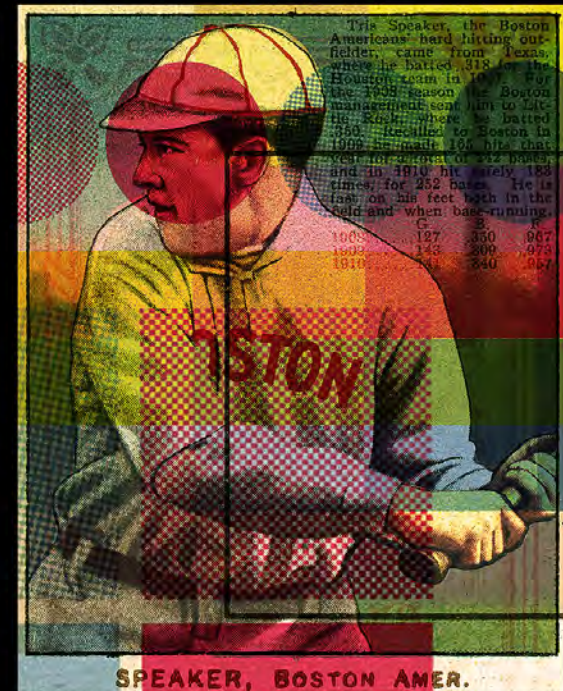
STAHL, BOSTON AMER.



Percy Wagner, captain and shortstop of the Red Sox, came to Boston from New York in 1907. The New York management had carried him for several years as a utility infielder, but in 1906 an accident gave him a regular shortstop position and a chance to show his ability and a rise in position. He was promoted into the position of shortstop in the field and in 1910 he was on the line.

	G.	B.	R.
1907	126	247	832
1908	126	226	833
1910	123	273	907

WAGNER BOSTON AMER.



This Speaker, the Boston Americans' hard hitting outfielder, came from Texas where he batted .318 for the Houston team in 1907. For the 1908 season the Boston management sent him to Little Rock, where he batted .363. Transferred to Boston in 1909 he made 165 hits that year for a total of 242 bases, and in 1910 hit safely 183 times for 252 bases. He is fast on his feet both in the field and when base-running.

	G.	B.	R.
1908	127	350	967
1909	143	309	973
1910	144	340	957

SPEAKER, BOSTON AMER.



# Joanne Kaliontzis



**TH** THE MODERN WOMAN owes a lot to today's good sense in diet. She eats light, drinks light, and keeps her youthful figure longer. She looks better, feels better. Men like her better. And so does her insurance company.

For her, today's Pepsi-Cola is refreshment made to order. For Pepsi has kept in step with sensible changes in modern taste.

Dry, never too sweet, reduced in calories, it goes with all the wholesome ways of living that help make her what she is.

**refreshes**



# Joanne Kaliontzis



# Joanne Kaliontzis





# Joanne Kaliontzis



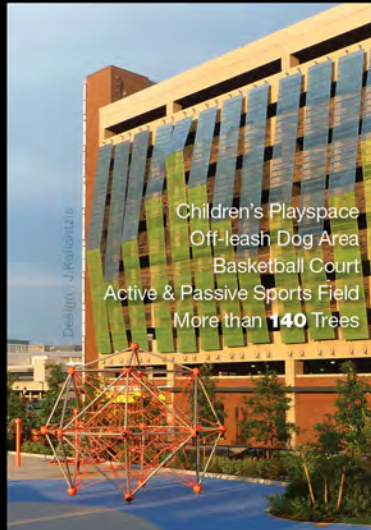
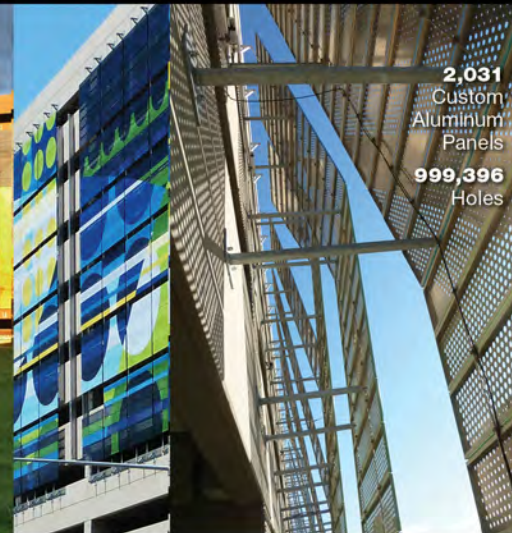
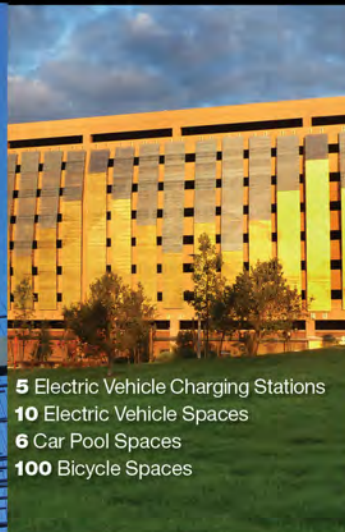


Joanne  
Kaliontzis





# Joanne Kaliontzis



Deanna Lee



# Deanna Lee





# Deanna Lee





# Deanna Lee





# Deanna Lee

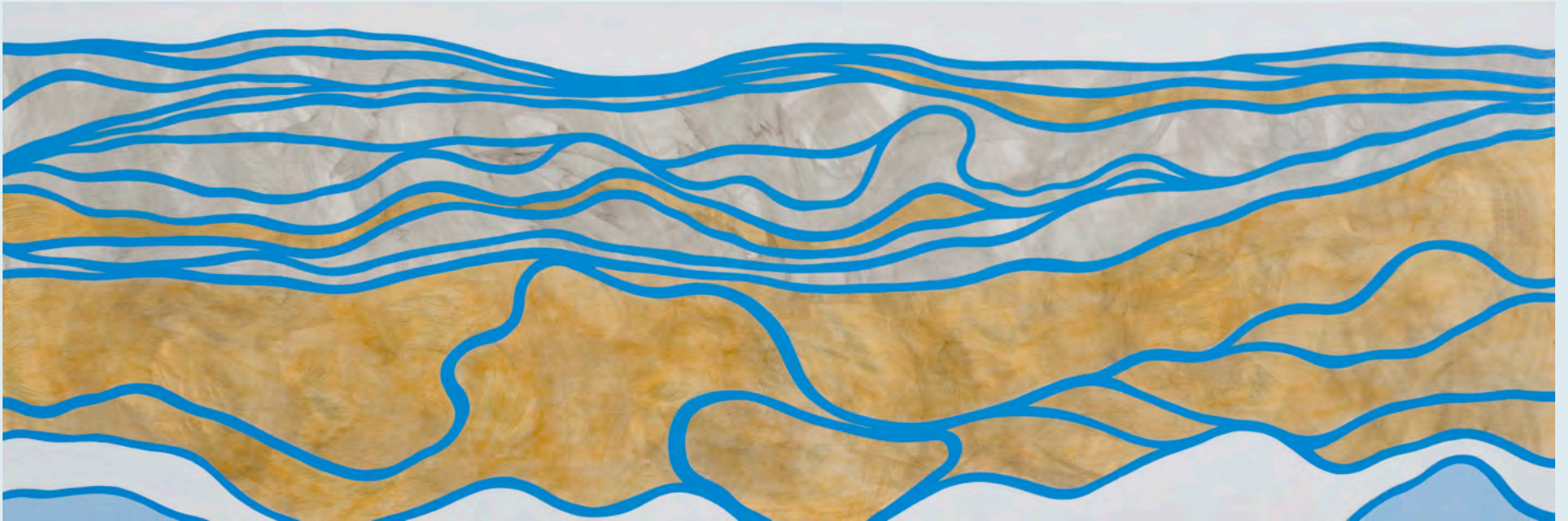




# Deanna Lee

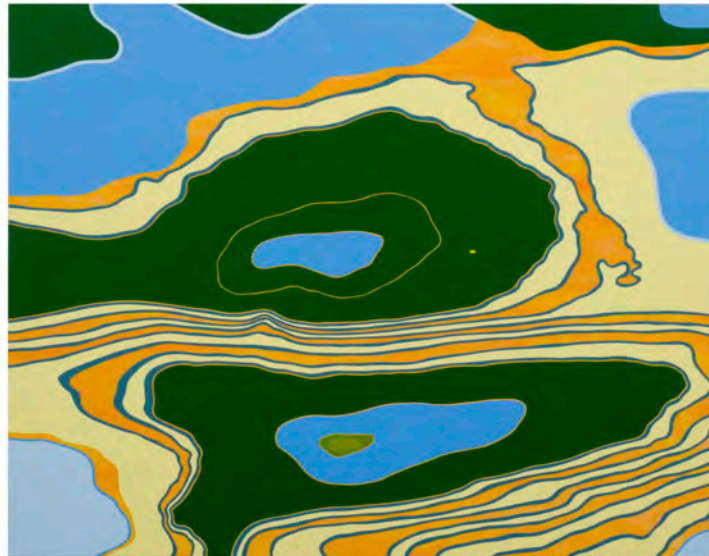


# Deanna Lee





# Deanna Lee



# Deanna Lee





# Deanna Lee



# Deanna Lee





Miranda Updike

# Miranda Updike

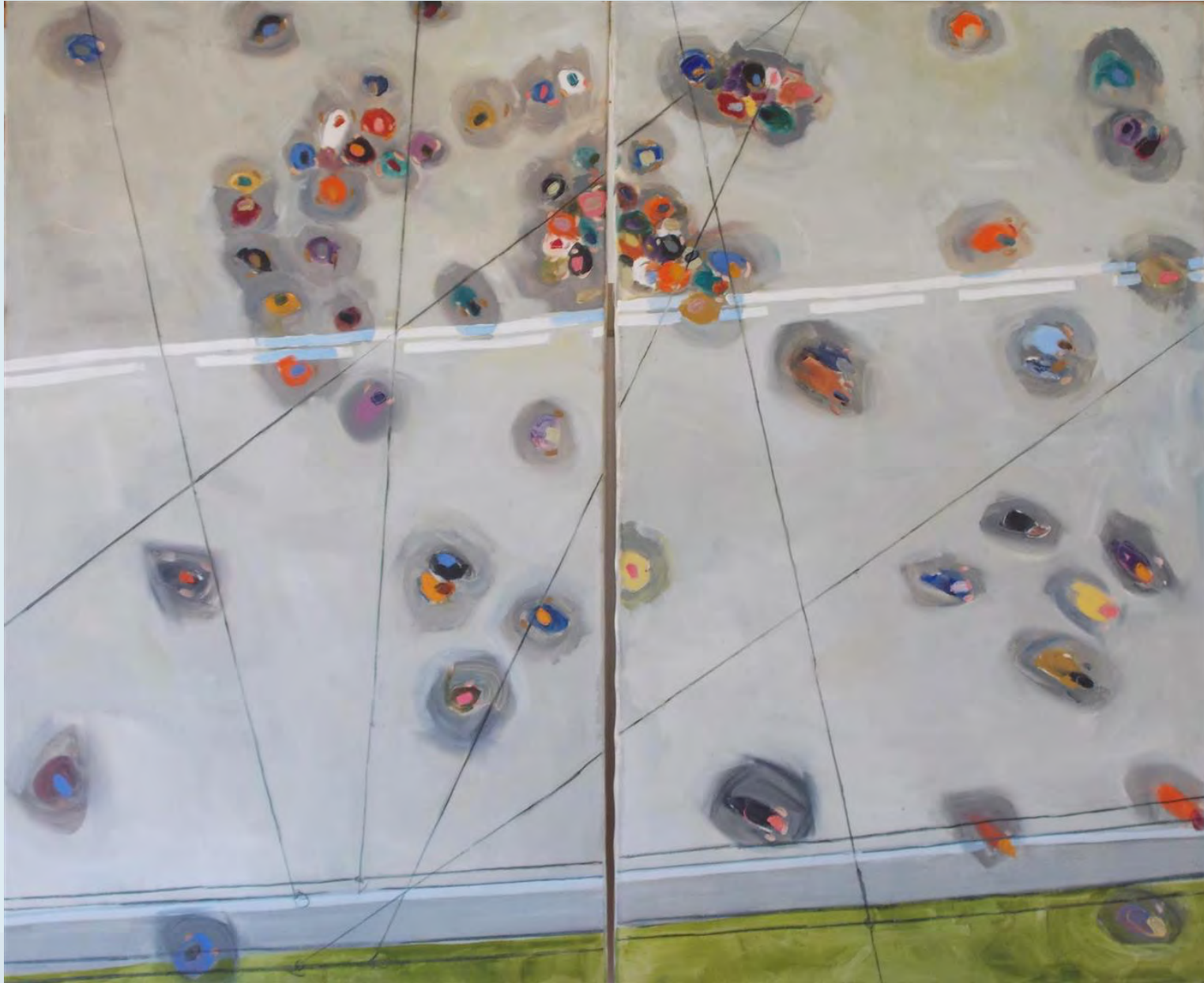




# Miranda Updike



# Miranda Updike





# Miranda Updike



# Miranda Updike





# Miranda Updike



# Miranda Updike





# Miranda Updike



# Miranda Updike





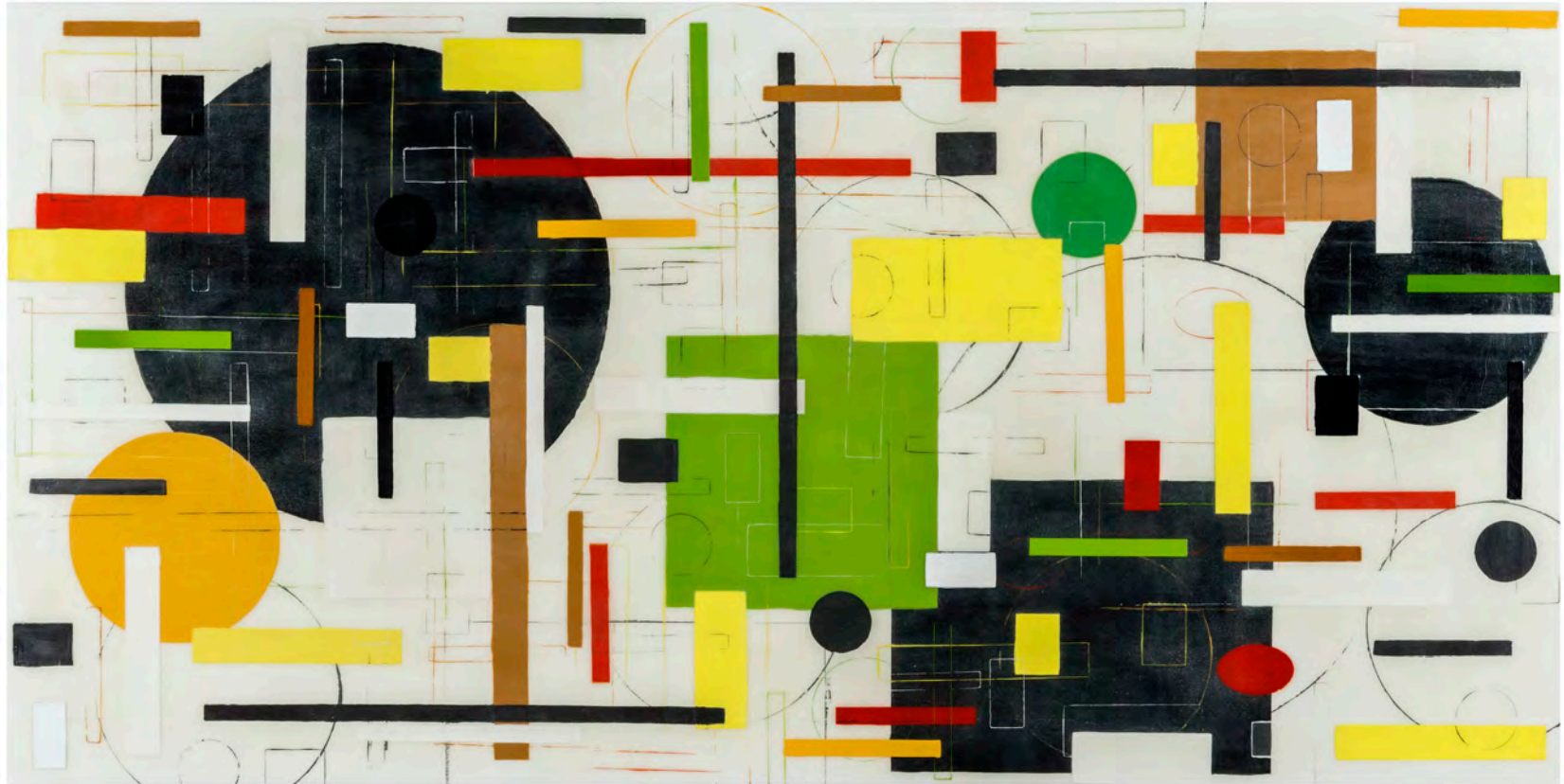
# Miranda Updike



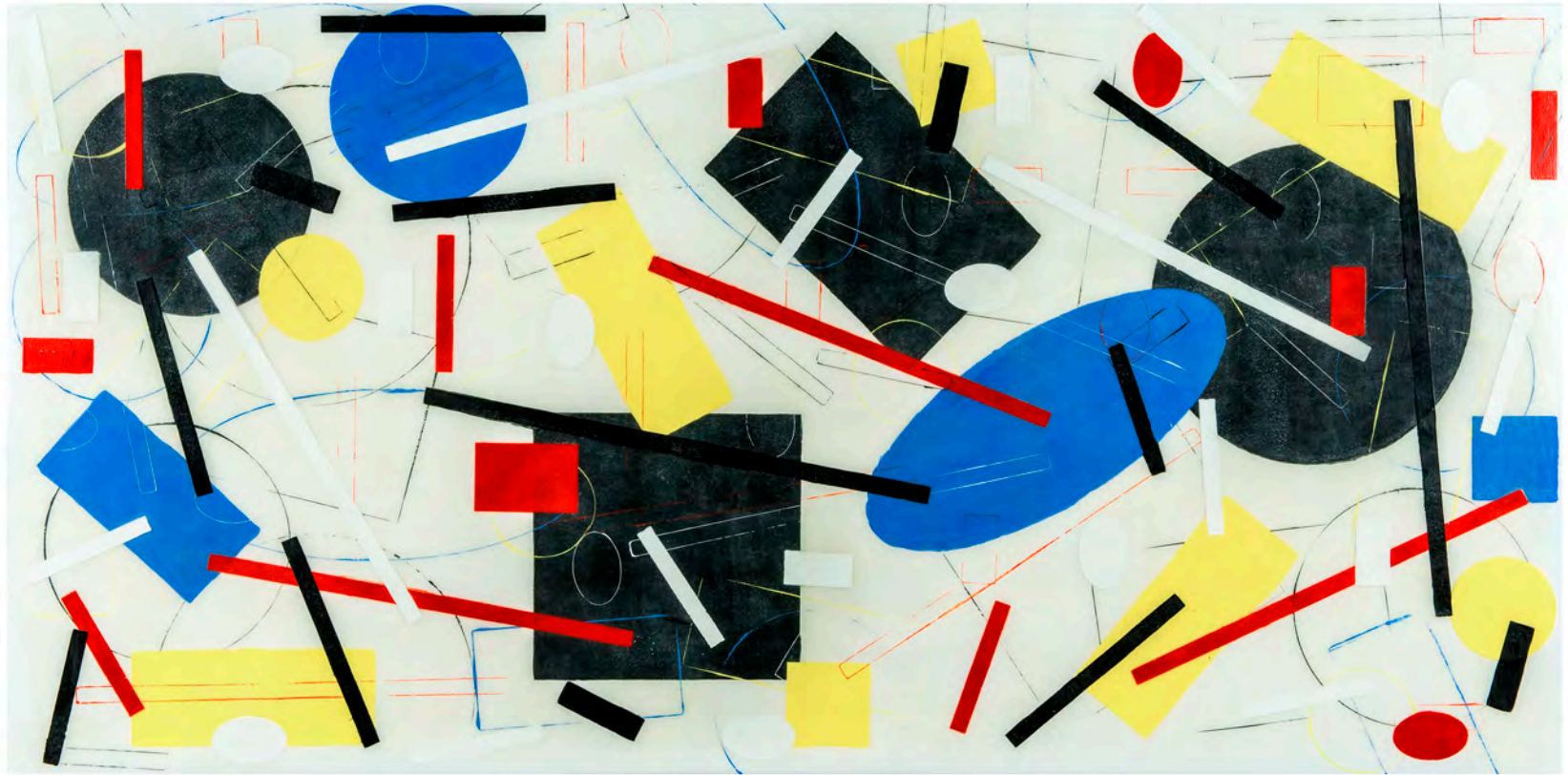
Christine Vaillancourt



# Christine Vaillancourt



# Christine Vaillancourt





# Christine Vaillancourt



# Christine Vaillancourt





# Christine Vaillancourt

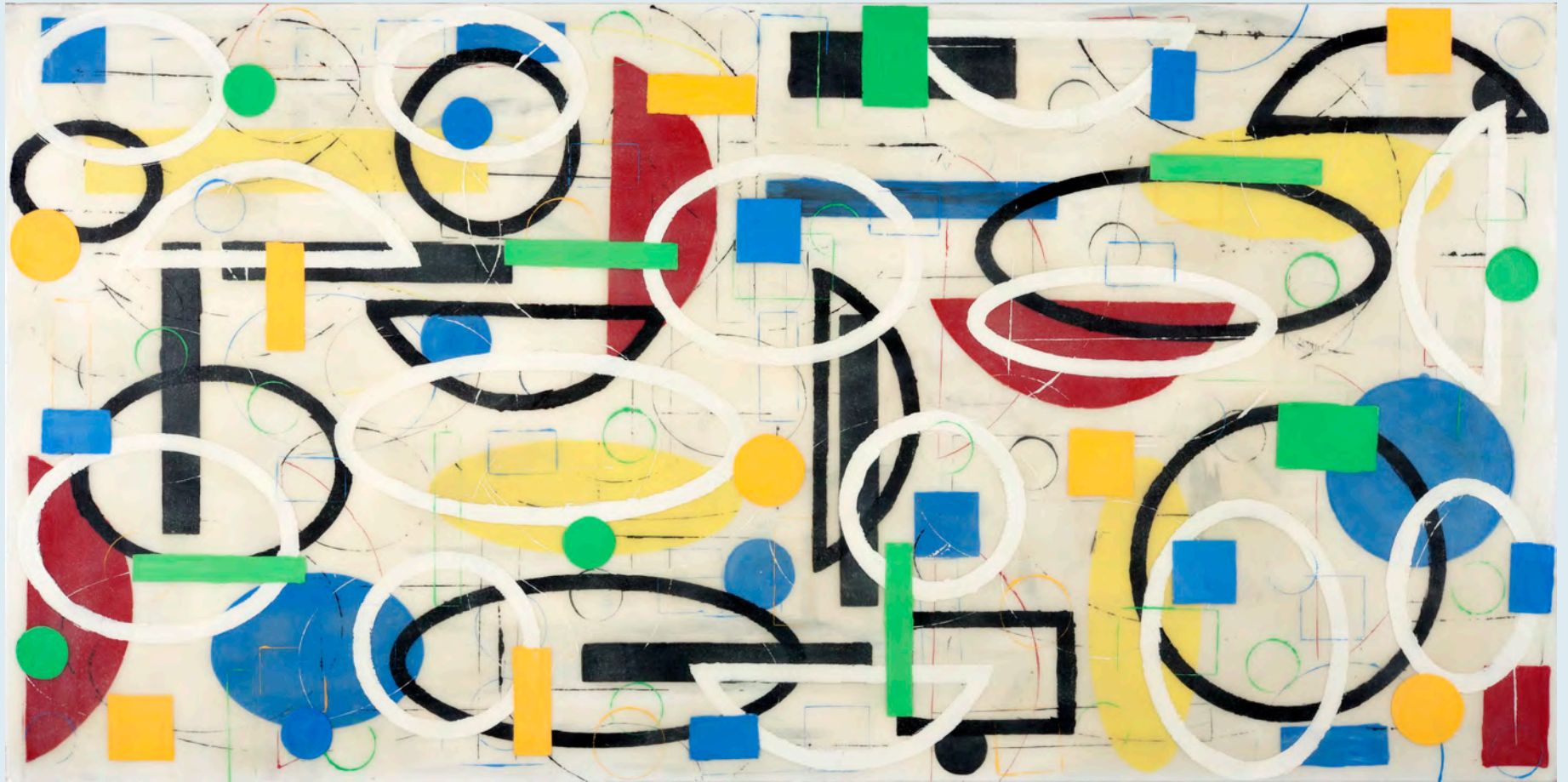


# Christine Vaillancourt





# Christine Vaillancourt



# Christine Vaillancourt





# Christine Vaillancourt



# Christine Vaillancourt





# Q&A

Email comments on the 11 semi-finalist artists to  
[christina.lanzl@urbancultureinstitute.org](mailto:christina.lanzl@urbancultureinstitute.org)

Due date: Thursday, November 12, 2015

MBTA Integral Art Program Information  
[www.mbta.com/about\\_the\\_mbta/art](http://www.mbta.com/about_the_mbta/art)

Chelsea Station Porcelain Enamel Panel Art Project Summary  
[www.urbancultureinstitute.org/mbta-silver-line-extension](http://www.urbancultureinstitute.org/mbta-silver-line-extension)