

Civil Rights Era Tribute

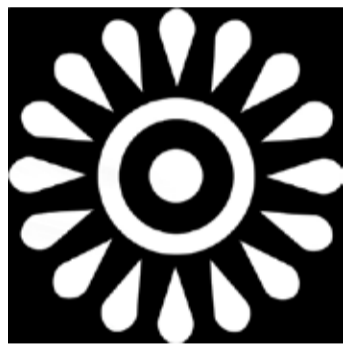
Proposal by the Artist Team of Doug Kornfeld and Destiny Palmer

November 2019

The latest design for Howes Park is made up of four parts

- A large pavement pattern for the main plaza space
- A new seating wall, stage paving, and large focal point stone
- Neighborhood pavement map marked with Civil Rights historic locations
- New planting

The large pavement pattern: an Adrinka symbol: “Mako”



Significance: A symbol of inequality and uneven development.

Mako is a shortened form of the Akan proverb “Mako nyinaa mpatu mmere,” literally “All peppers (presumably on the same tree) do not ripen simultaneously.”

This proverb admonishes the greater ones to help the less fortunate with the implicit understanding that fortunes could reverse so that they would also need someone’s help. As the Akans say, “Mmere dane,” literally, “Time changes” so any advantage one may have now may not persist forever.

“Mako nyinaa mpatu mmere” could also be an exhortation to those behind to strive for advancement and not resign to fate. That someone has attained greatness shows that it is attainable. Yes, some may shoot ahead first but eventually others can catch up—eventually all the peppers will ripen. Adinkras.”

This symbol is used, not as the final design, but as a preliminary image to stimulate community discourse on the journey to a final design. Other symbols might also be considered (including but not limited to): “Ananse Nontan,” “Adinkrahene.” See the attached pages.

The new 18” high seating wall, stage pavement, and large focal point stone

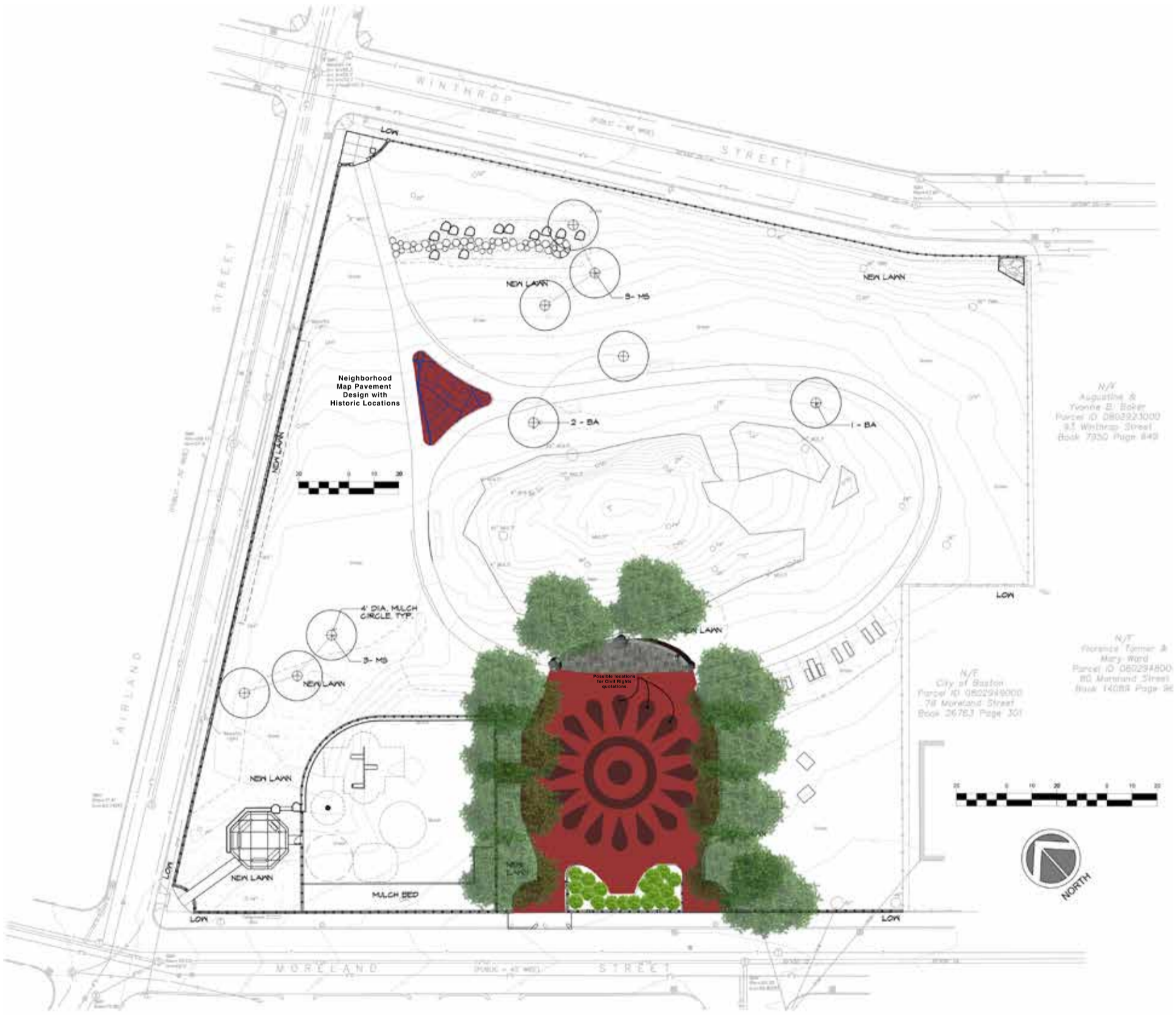
The seating wall will be rebuilt using the existing stones and capped with a new finished granite top. A large granite stone with a quotation about the Civil Right Movement will be incorporated into the wall. The local community will select the quotation. A paved stage will be incorporated into the seating wall and be raised 6” inches above the plaza level.

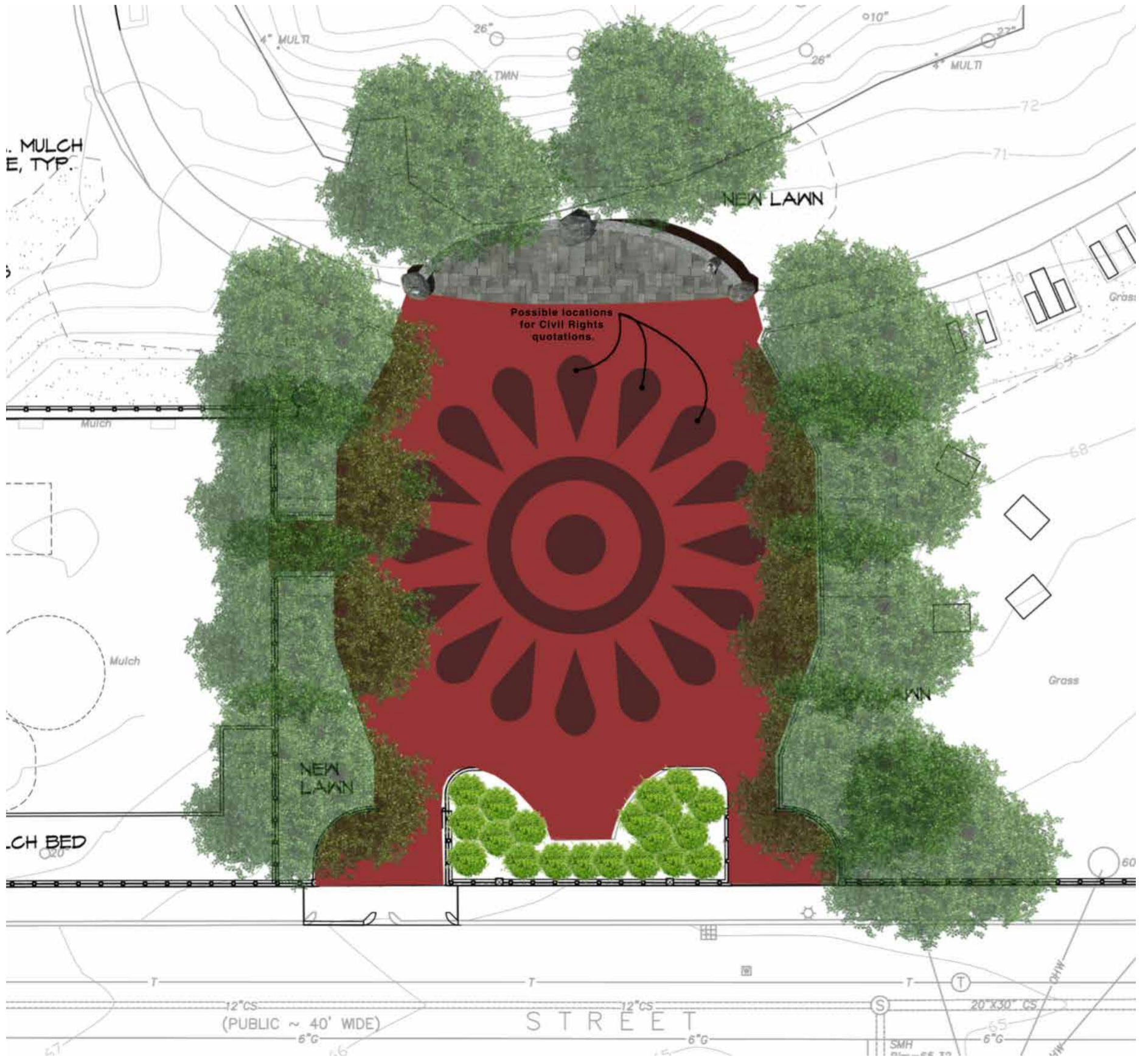
Neighborhood pavement map marked with Civil Rights historic locations

A map of the surrounding Moreland Neighborhood will be incorporated into the walkway pavement. Historic locations and residences that relate to the Civil Rights Movement will be placed into the pavement design. Corresponding marker/plaques will be provided to the residences and locations in the neighborhood. This map would provide a “teaching moment” for park visitors and will become a “Freedom Trail” like experience for the neighborhood.

New planting

Additional trees will be planted on the periphery of the plaza to give a sense of enclosure and provide more shade in the summer.





MULCH
E, TYP.

NEW LAWN

Possible locations
for Civil Rights
quotations.

Mulch

Mulch

NEW
LAWN

CH BED

LAWN

Grass

60

12"CS
(PUBLIC ~ 40' WDE)

STREET

20' X 30' CS

S

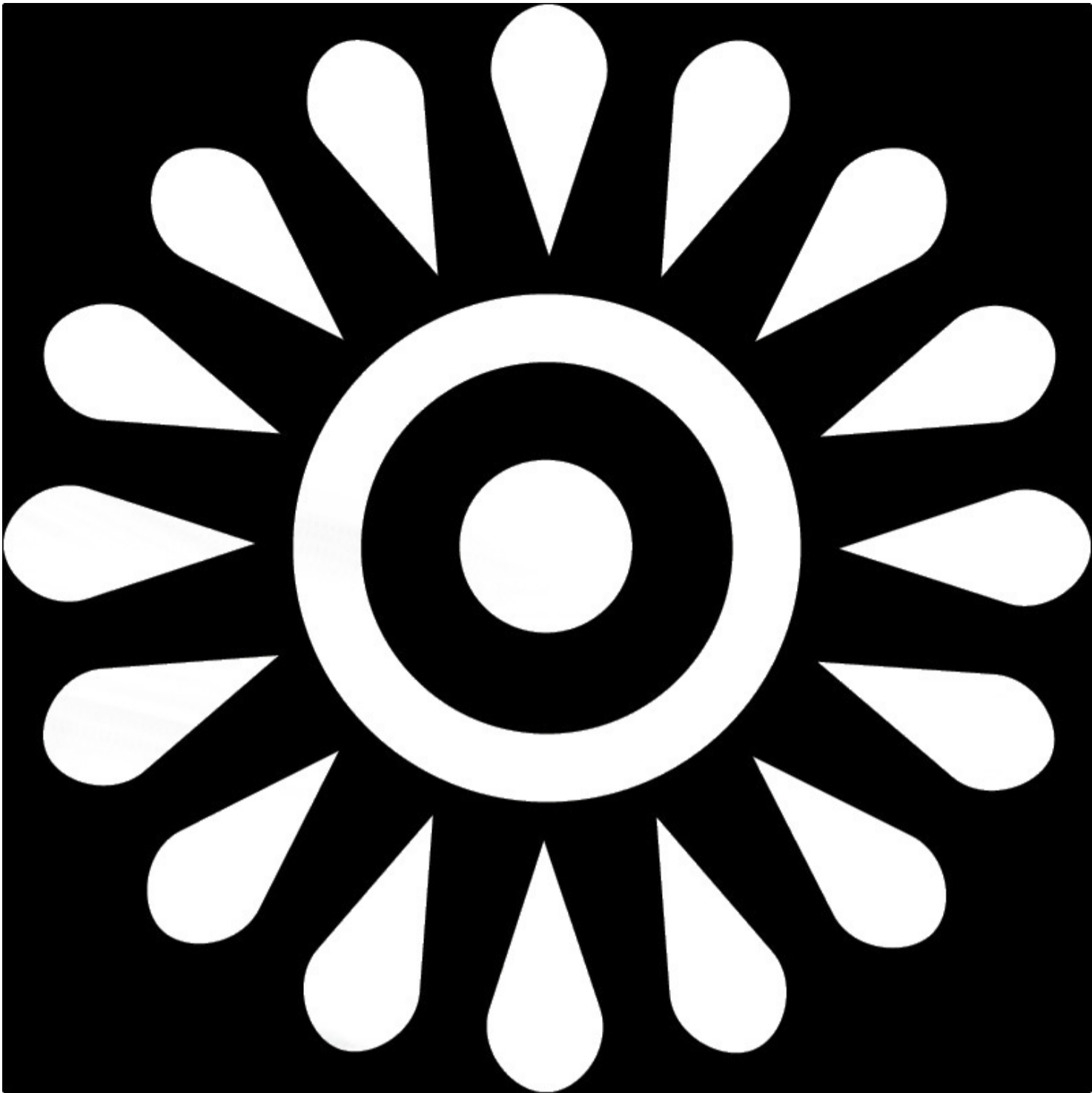
T

65

6" G

SMH

6" G



Mako

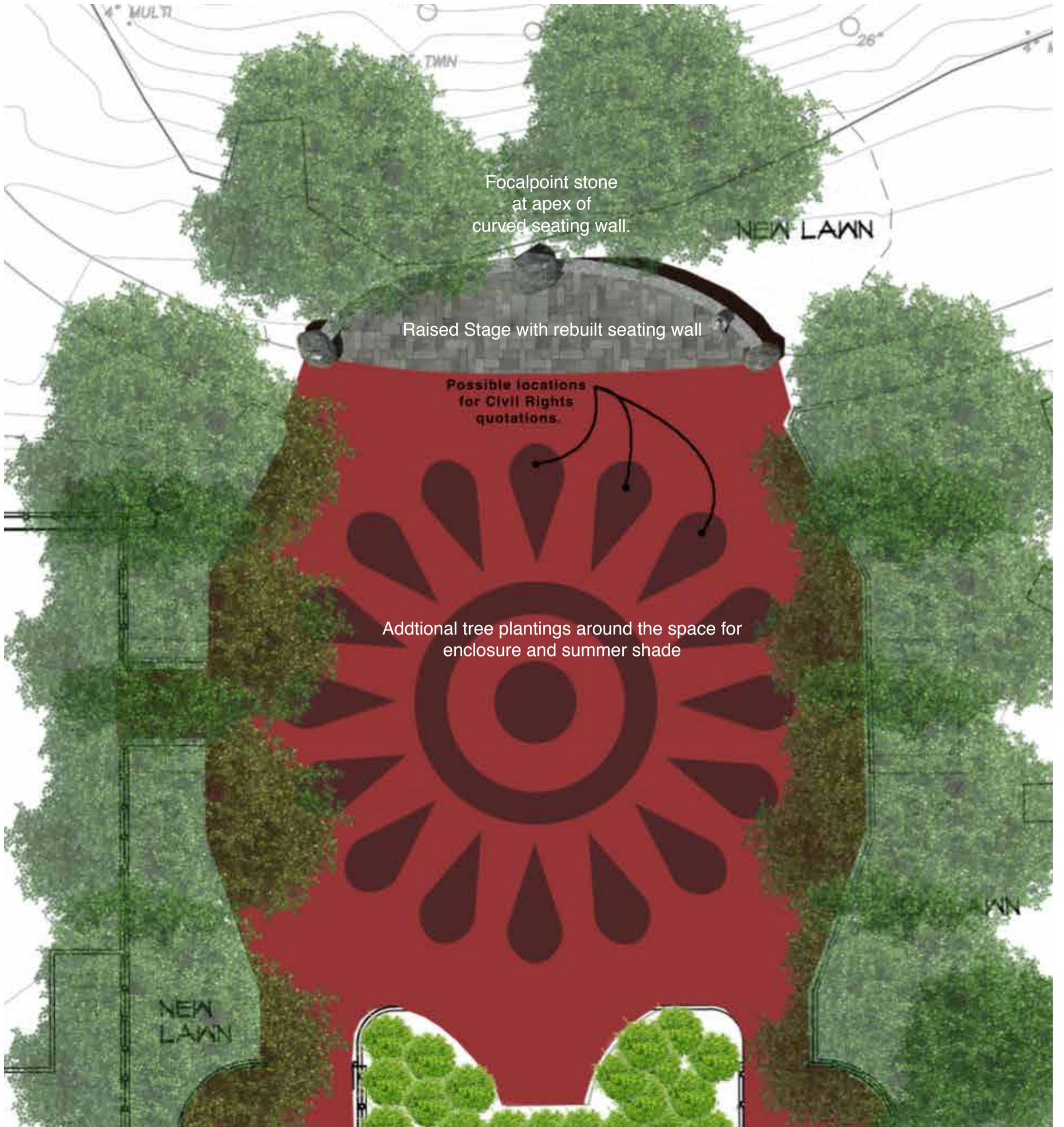
Significance

A symbol of inequality and uneven development.

Mako is a shortened form of the Akan proverb “Mako nyinaa mpatu mmere,” literally “All peppers (presumably on the same tree) do not ripen simultaneously.”

This proverb admonishes the greater ones to help the less fortunate with the implicit understanding that fortunes could reverse so that they would also need someone’s help. As the Akans say, “Mmerɛ dane,” literally, “Time changes” so any advantage one may have now may not persist forever.

“Mako nyinaa mpatu mmere” could also be an exhortation to those behind to strive for advancement and not resign to fate. That someone has attained greatness shows that it is attainable. Yes, some may shoot ahead first but eventually others can catch up—eventually all the peppers will ripen. Adinkras.”



Focalpoint stone
at apex of
curved seating wall.

NEW LAWN

Raised Stage with rebuilt seating wall

Possible locations
for Civil Rights
quotations.

Additional tree plantings around the space for
enclosure and summer shade

NEW
LAWN

WN



Moreland Street Park
Entry Gates

New Brick Pavement

Decorative Pavement
rendering
Adrinka symbol: "Mako"

New Brick Pavement

Granite Paved "stage"

Granite Paved "stage"

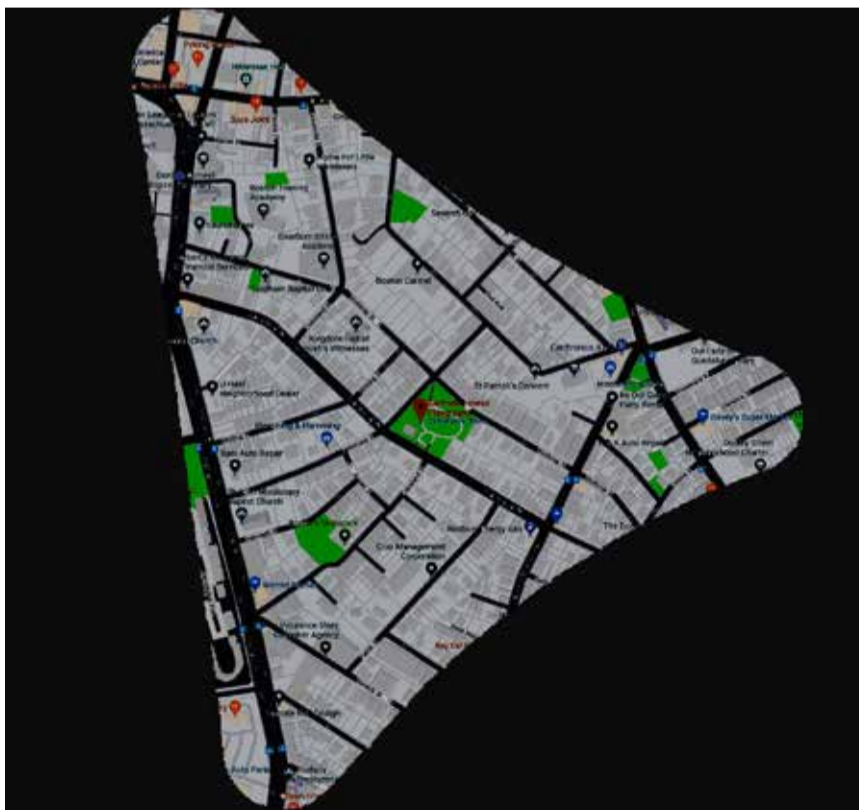
Focalpoint
Stone

Rebuilt Seating wall w/ new granite cap.

Rebuilt Seating wall w/ new granite cap.



Plaza Design With Play Fountains



Moreland Neighborhood Map



Moreland Neighborhood Map rendered in granite and brick paving