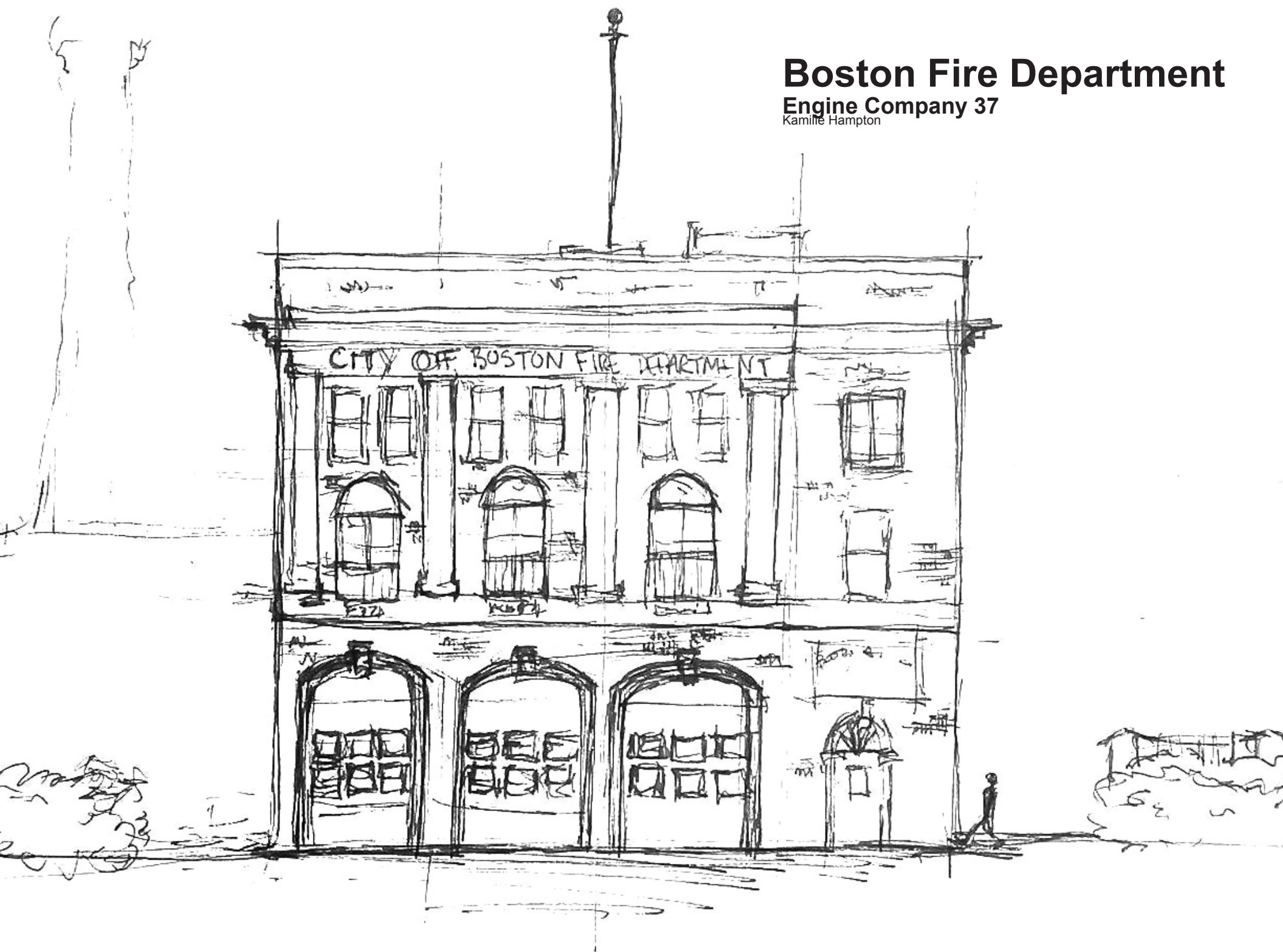


Boston Fire Department

Engine Company 37

Kamille Hampton

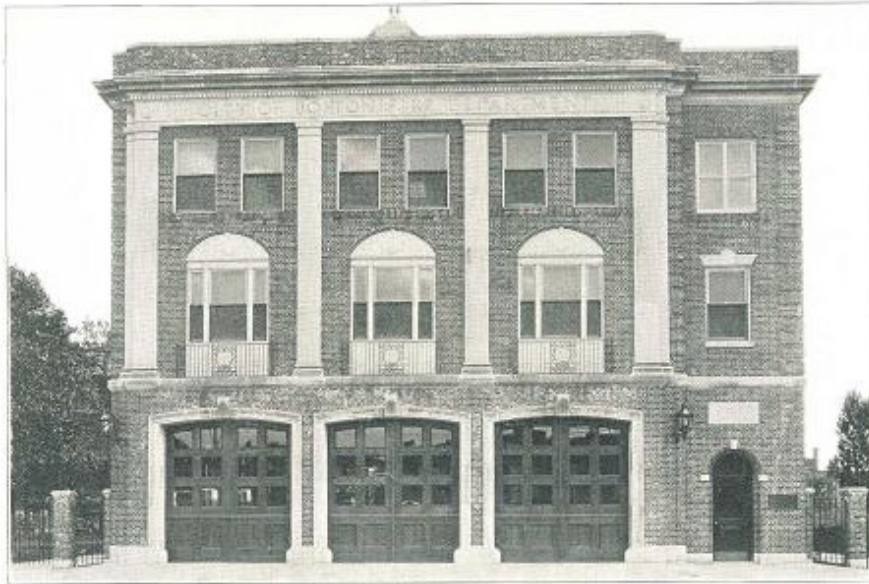




Early photograph of the firehouse at 352 Longwood Ave., Fenway, circa 1875.

Location Name: Fenway Area
Title: Boston Fire Department Engine Company 37
Year of Completion: October 11, 1933
Site Address: 560 Huntington Ave, Boston, MA 02115
Architect: N/A
Materials: Brick/ Stone Veneer

Emergency service vehicles are prominent and in constant rotation in the Fenway area. Vocal and assertive they plow through the congested traffic and warn off pedestrians from afar to save lives and solve the greater issues we have in our community. One of the most recognizable sounds heard in the Fenway, Roxbury, South End and Back Bay area are the sirens of the Boston Fire Department Engine Company 37. The Fire Department is an organization of dedicated professionals who are committed to the continuation of serving and protecting, life, property, the environment, education, and continuing the service of medical and fire. Their presence in the Fenway cannot be missed or uninterrupted as the constant traffic of Route 9 must instantly morph to the needs of the Fire Departments call to duty. Located between the Wentworth Institute of Technology, Museum of Fine Arts and Northeastern campus intersection of Huntington Ave, Ruggles and Louis Prang Street, the Engine Company 37 make themselves known maneuvering in and out of their historical habitat on 560 Huntington Ave.



ENGINE COMPANY 37 AND LADDER COMPANY 26, 560 HUNTINGTON AVENUE.

Photo of the firehouse at 560 Huntington Avenue, Fenway, at opening in 1933.

The Boston Fire Department Engine Company 37 residence on Huntington Avenue was not their first headquarters, but their second. The former quarters were located on 352 Longwood Avenue, at the corner of Ruggles Street, pushed farther into the Roxbury section of the city of Boston. The original firehouse was built in 1874 and at the same time the Chemical Engine Company 3 was organized on July 27, 1874. The Engine Company 37 was put into formation on September 16, 1890. On October 4 1910, Chemical 3 was designated Combination Ladder 10, and prior on April 21, 1905 Combination Ladder 10 was designated Ladder Company 26. A new space for the fire department had to be developed making the Engine 37 and Ladder 26 moved on October 11, 1933 to the new firehouse at 560 Huntington Ave. The old firehouse was later on reused as a commercial space florist shop in the 1980s to 2000s but soon later was demolished in 2008 for a new medical research and office building. Currently is used today as the District Fire Chief of District 5 shared quarters with the Engine 37 and Ladder 26 response teams.



Current state in 2016 of Firehouse on Huntington Avenue

Built in 1933 the firehouse holds styles that are derived from the Colonial Revival. The style arose in 1876 during a centennial period of the nation's founding and was the base of design for many years. Colonial revival is the essence of the American colonial and federal periods. This style, also known as the Georgian style, was a very popular, widespread, and long-lived through the construction of homes, public, and government buildings throughout the Massachusetts. This is due to the fact that the construction was developed to withstand the vast climate changes in the Northeastern area. Typical features that are associated with colonial design are facades with brick and stone veneer applique, are accentuated front doors with decorative pediment, symmetrical facades with aligned windows, flat roofs, and masonry cladding.

The main facade that is directed towards Huntington Avenue is non-symmetrical due to the east facade extension from a cubic formed extension developed as an entrance for the employee circulation and the private floors on the 1st and 2nd stories. Four ornamental columns accent the front of the active facade with decorative elements. Red pediments, small balconies on the second 1st story windows and a stone veneer cornice acts as a banner that expresses the building's functional purpose being 'City of Boston Fire Department. Wrapped around the exterior of the complex is a small parking lot meant for the firefighters with a greenery barrier to hold. The Green line passes through the center of Huntington Ave, but a gap is left in front of the entrance of the firehouse to allow easier access in and out of the building.