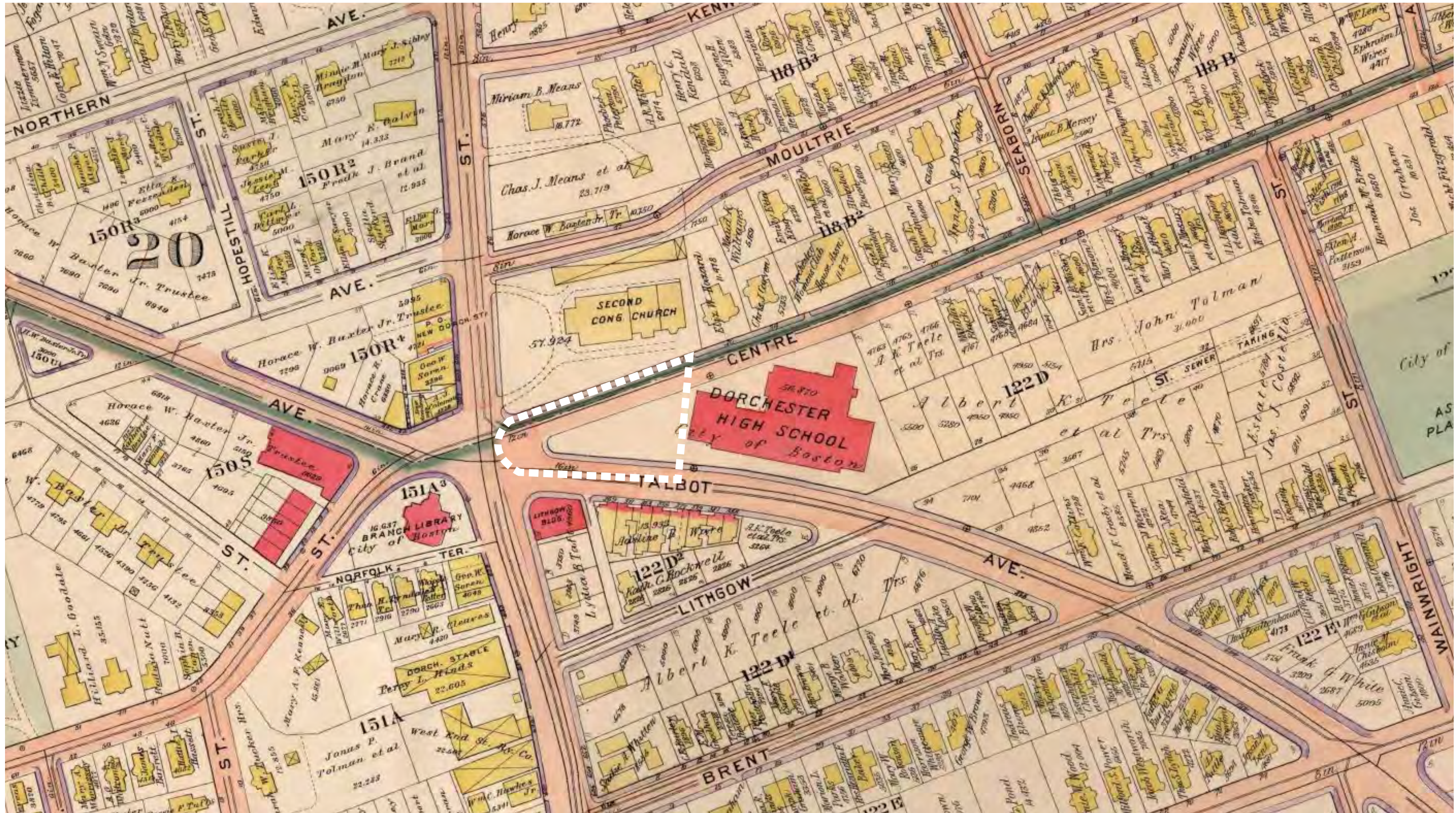




Welcome to  
Codman Square Park







# CODMAN SQUARE PARK

## Historical Influences

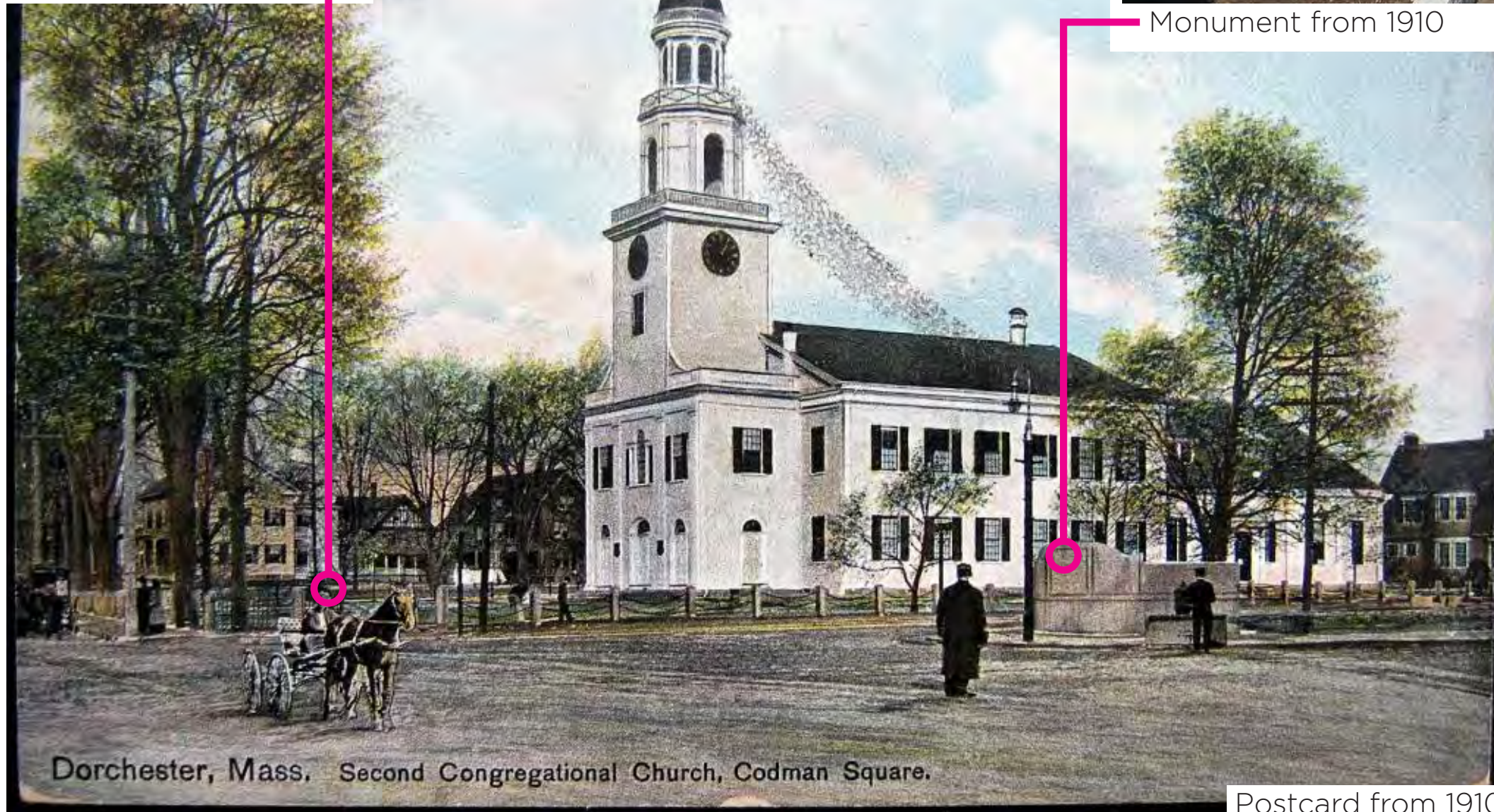


Bollards + Granite Piers

Second Church, 1806



Monument from 1910



Postcard from 1910







# CODMAN SQUARE PARK

## Existing Conditions



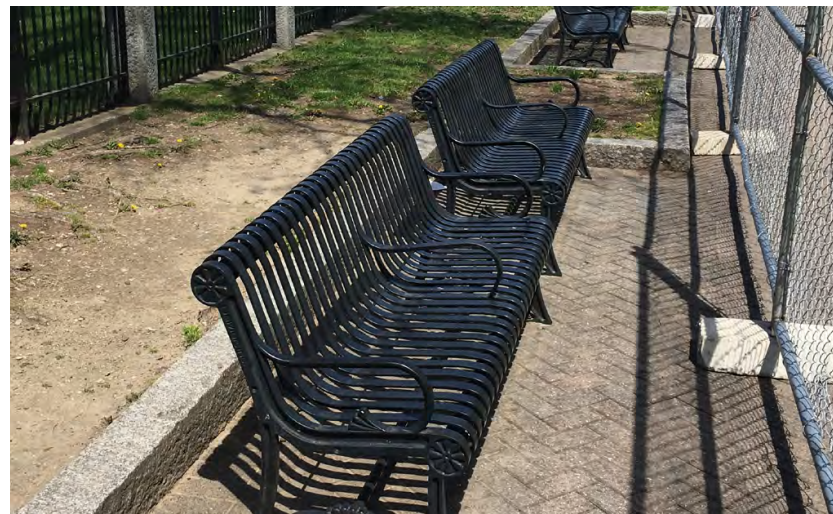
**Fencing**



**Gates**



**Granite seating**



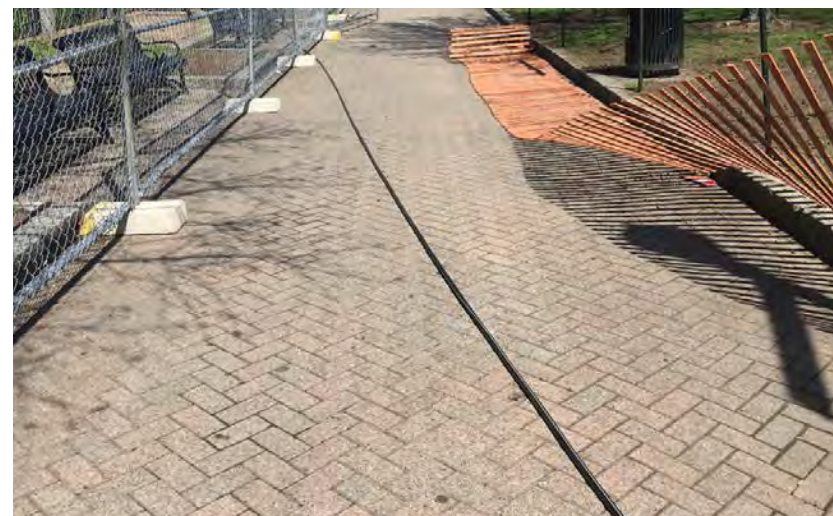
**Benches**



**Trash receptacles**



**Codman monument**



**Pavers**



**Mature trees**



**Open lawn**



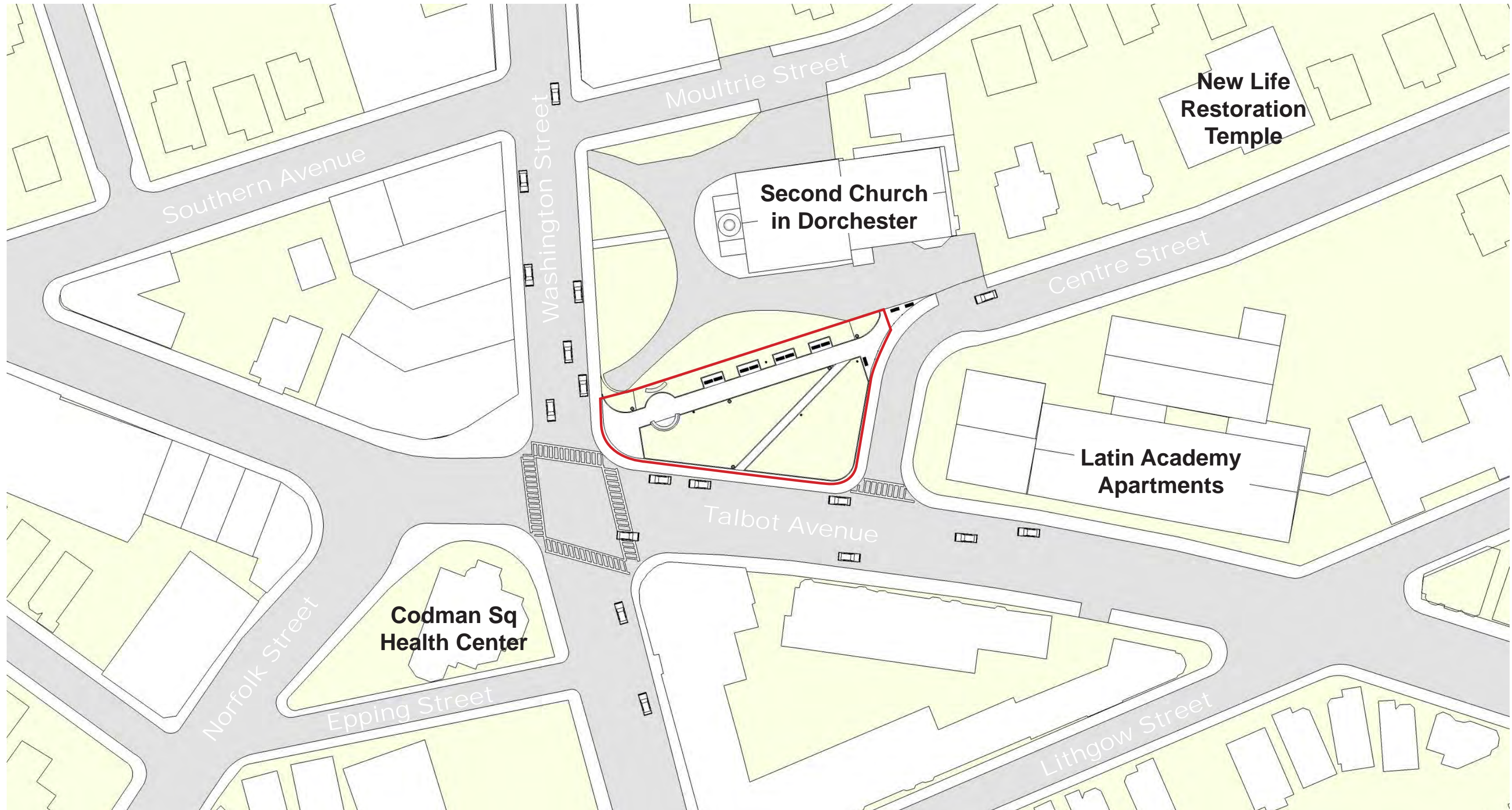
**Observations**

1. Some people bring milk crates as an informal seating arrangement.
2. Washington Street is very busy with vehicles and pedestrians.
3. There were three fresh vegetable/fruit vendors: a large general vendor, a single tent Asian vendor and the Oasis on Ballou urban farm.
4. The fence provided security and an edge for the park. BPRD has been able to close the park because of the fence.
5. People like the movable and varied seating.
6. Market vendors want the visibility along Washington Street.
7. The needs for the market can be designed into the park infrastructure.
8. Music along the street or in the park as part of the market is popular.
9. Is the fence separating the park from the church needed? So many people use the church property for circulation.
10. Are shrubs necessary for this park?

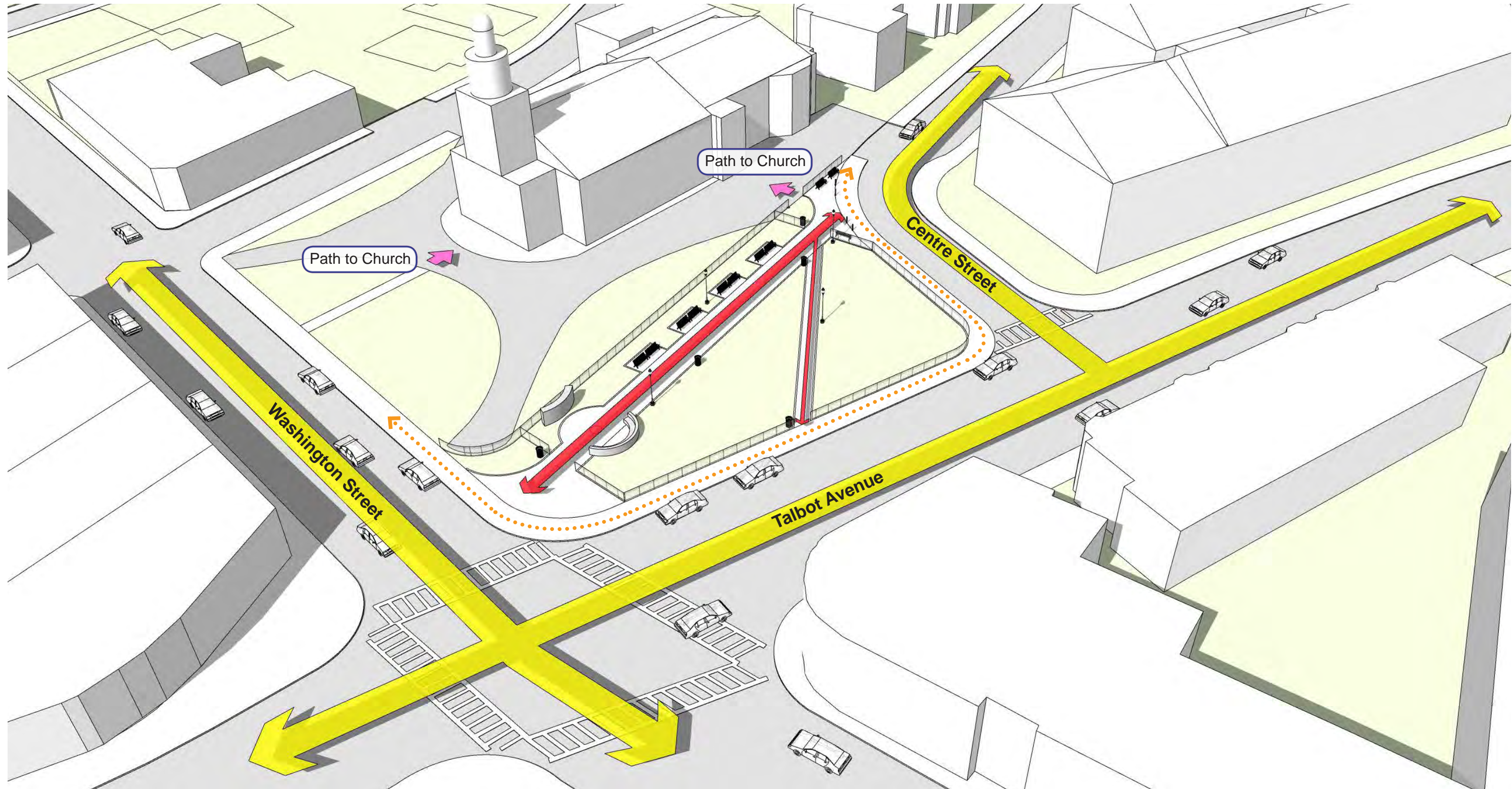
**Comments from the Public**

1. Would like the park to have shade and a rain garden. Noted the struggle to have street trees survey around the park.
2. There currently is no reason to come to the park other than the market.
3. It is a nice space along the street.
4. Like the market because it is not as crowded as the one at Ashmont.
5. Make sure the park reflects the community.
6. Consider game tables that include dominos. Program the site to include a neighborhood tournament.
7. Like the rain garden.
8. Need a drinking fountain.
9. There is often a crowd that drinks in the park or just outside the park. This makes some people uncomfortable and avoid that part of the park.
10. Exercise equipment would be a good way to bring people to the park.
11. Love the beautiful trees in the park.
12. Need more green and less pavement.
13. Can there be temporary art?
14. There are many businesses in the area that would be great sponsors for the park.
15. Flexible seating is good.
16. A Harvard researcher has good response from the public when positioned at the YMCA and the Daily Table.
17. Market vendor would like better van access-temporary parking along busy Washington Street is problematic.
18. Add a drinking fountain.
19. Add exercise equipment.



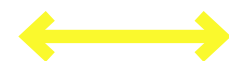






### Circulation

Legend:



Vehicular Circulation

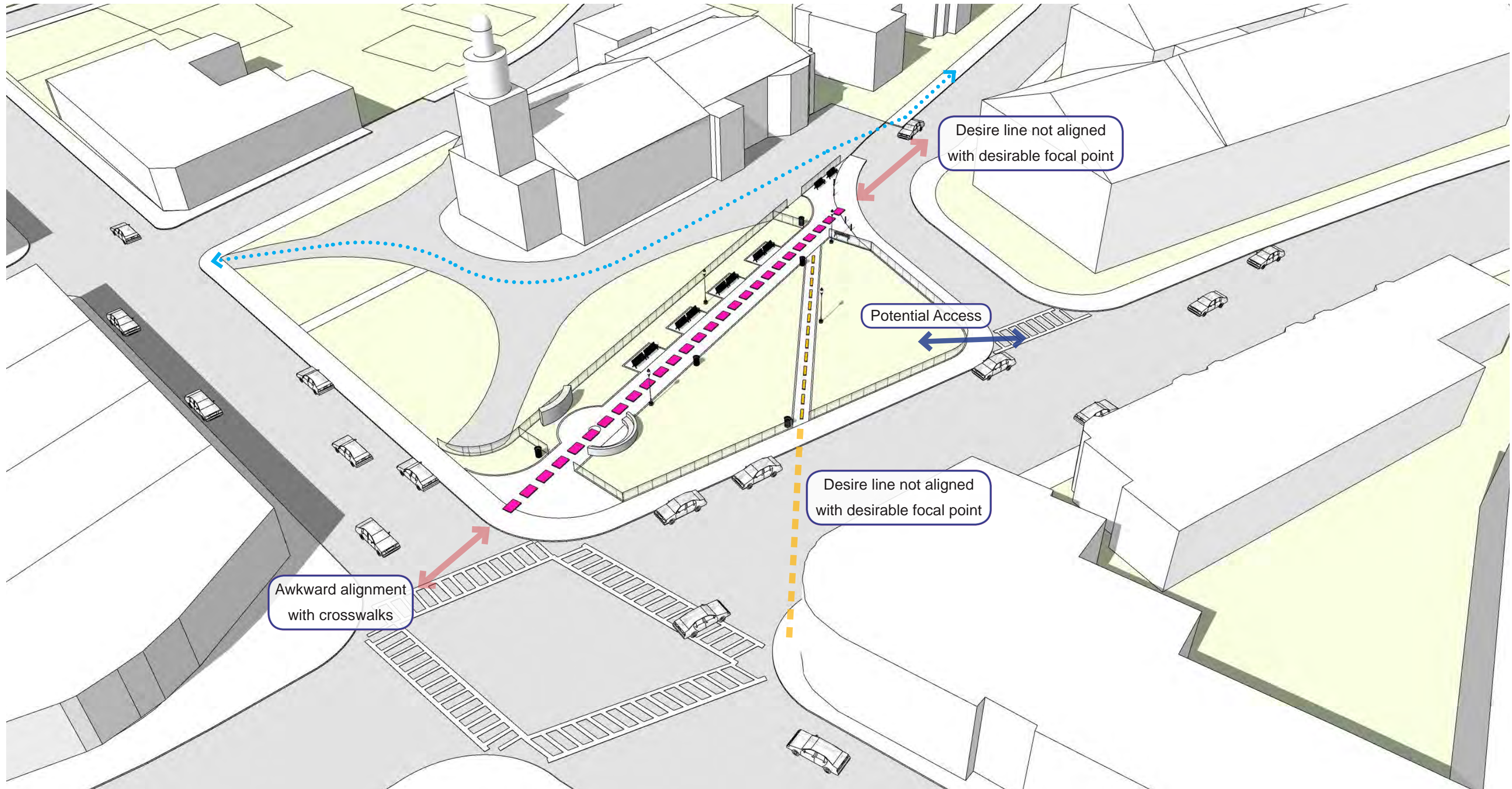


Pedestrian Circulation



Sidewalk





### Desire Lines

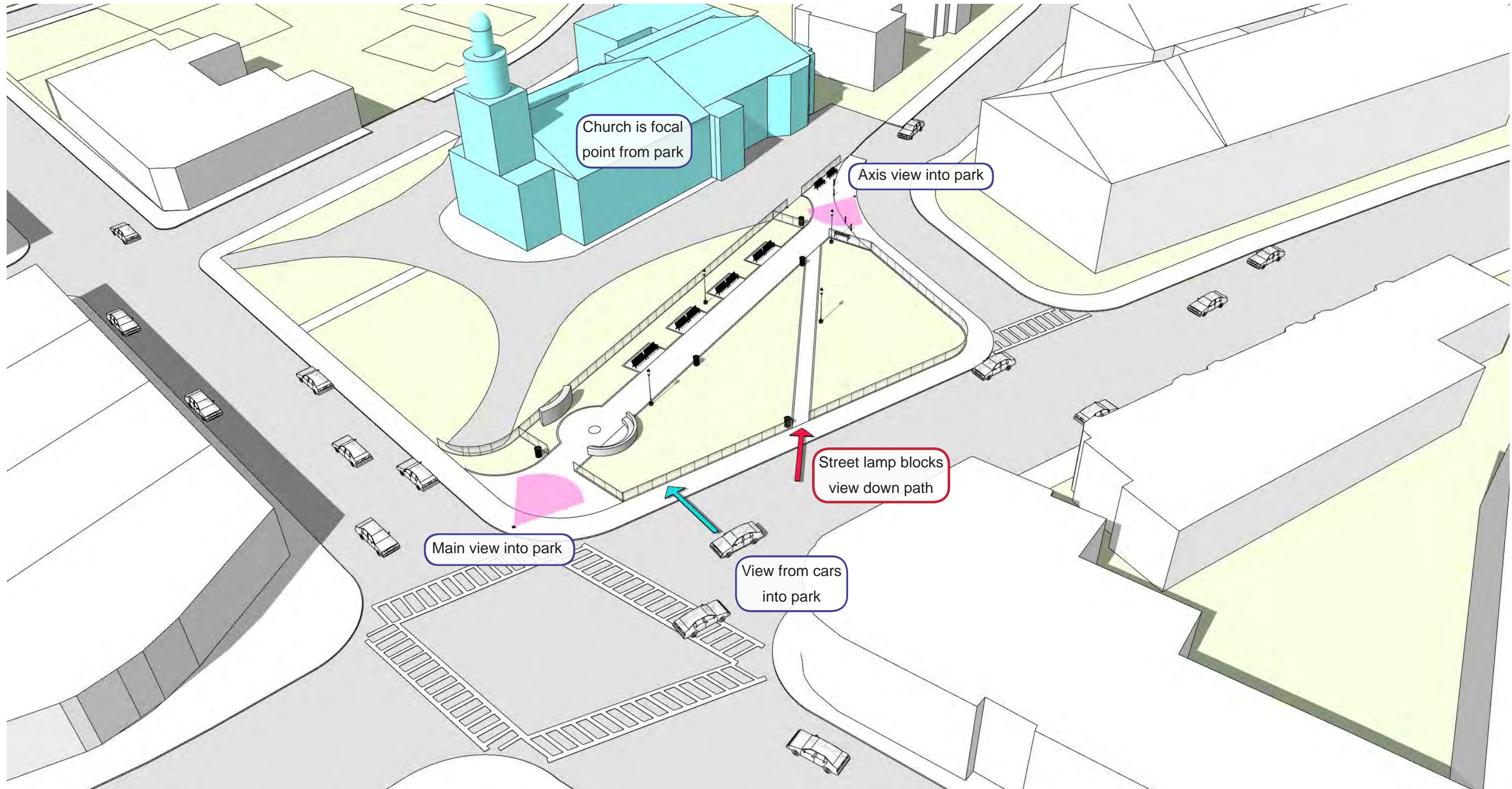
Legend:

— — — — — Primary Pedestrian Route

— — — — — Secondary Desire Line

◀.....▶ Social Path Around Park





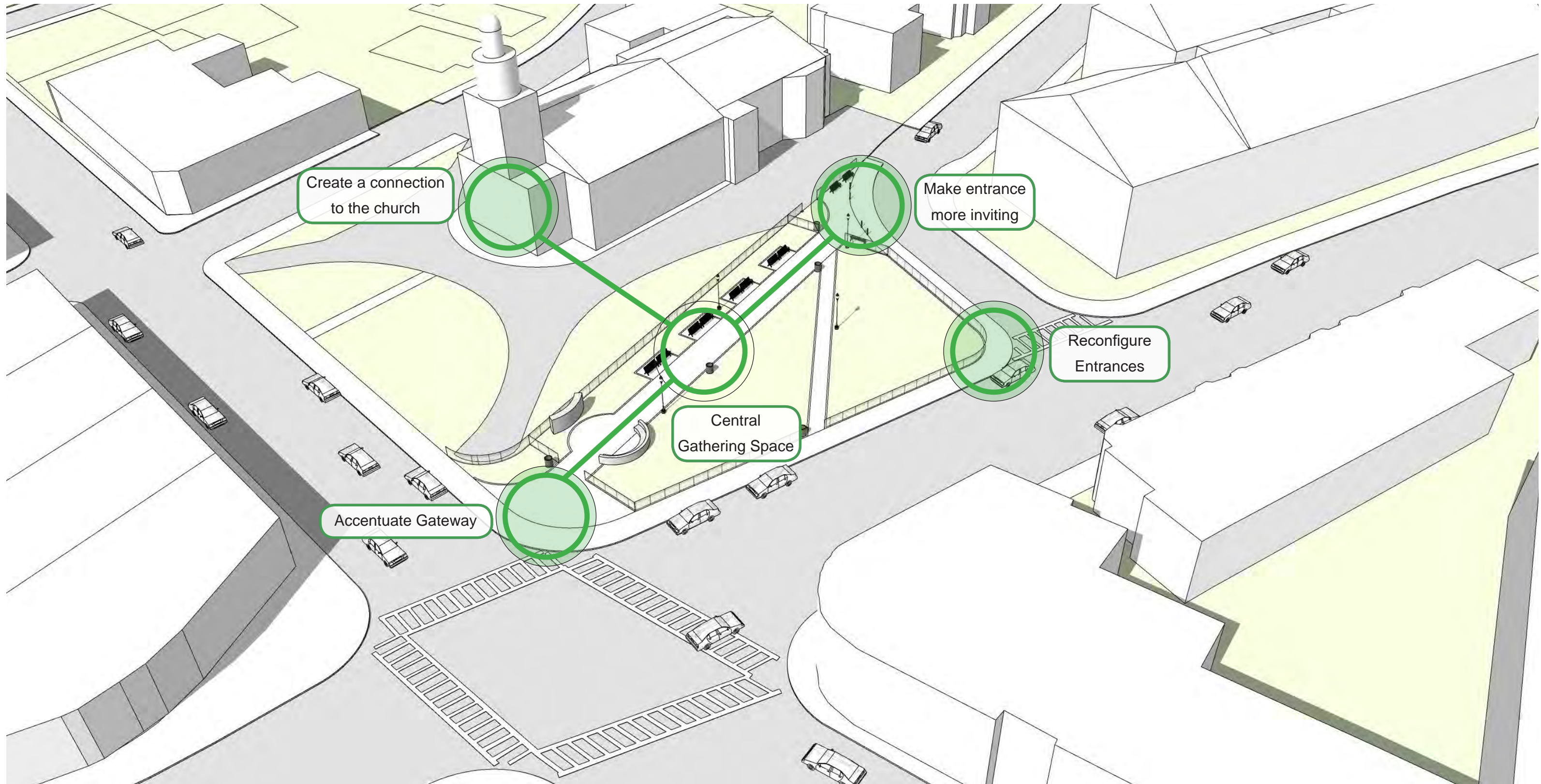
### Views

Legend:



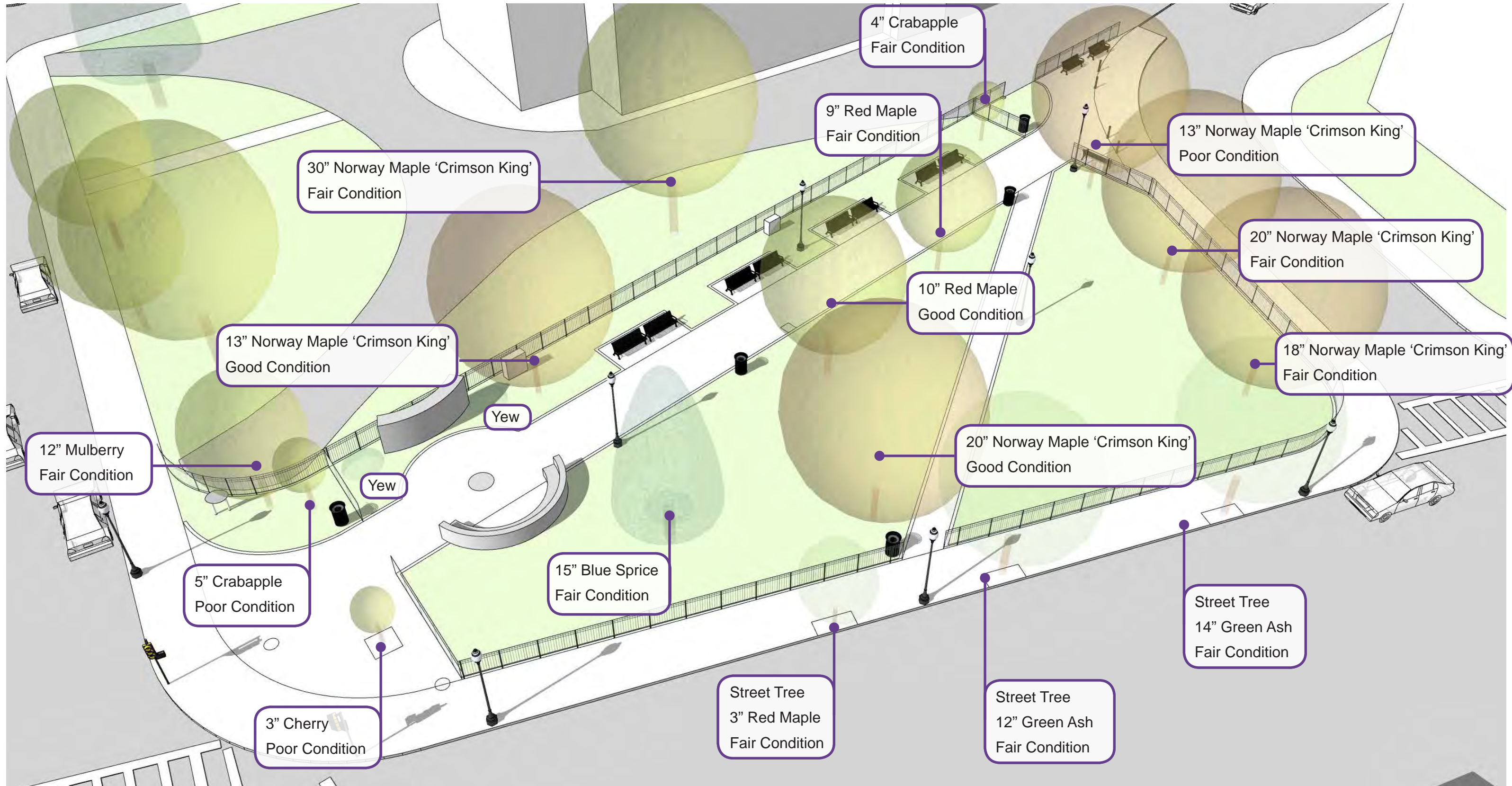
Viewshed





**Highlight & Buffer**







## Site Analysis





# CODMAN SQUARE PARK

Questions?

