

RAMLER PARK

Paula McKane

A Neighborhood Community Park

Completed 2004

130 Peterborough Street, West Fenway, Boston MA

Landscape Architect: Elena Saporta

Public Art: John Tagiuri

Size: 24,378 square ft / 0.5 acres



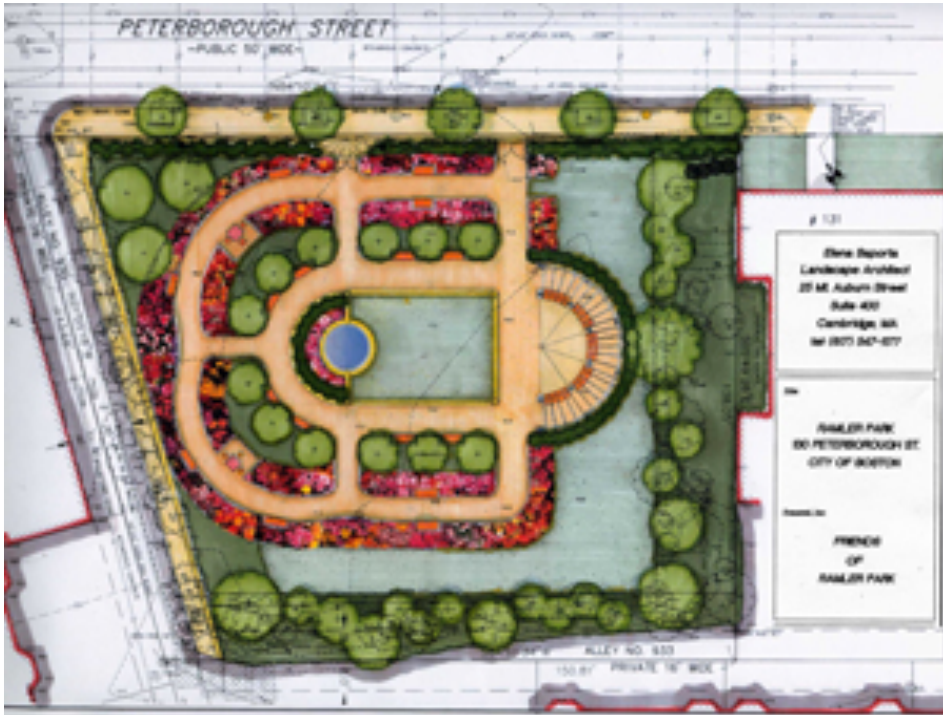
Ramler Park Center and Pergola



Construction Phase

Ramler Park is sited among the residential buildings of the Fenway area, and is nestled into the urban fabric as a small green paradise. On the corner of its block, it draws in pedestrians from the street and those that cut between blocks and through parking lots. The buildings around it are about five stories tall and there is a brick Boston feel, but from the center of the park, it is as if you do not stand in the city.

The park is named for David Ramler, a landowner and businessman in the Fenway, who had a plot of land which had been used on and off as a parking lot. His belief was that a park would be the perfect appreciative gesture towards the neighborhood and community he cared for. When he passed away in 1991 his family transferred ownership of the lot to the Boston Parks Department (officially transferred in 1999). In 2000, the preparation of the lot was begun to turn it into the park it is now. Designed by landscape architect, Elena Saporta, 2002-2004 saw plantings, the construction of the pergola, fountain and walkways. Another intention was to provide tree cover along the abutting residential building and alley to soften the urban feel.



Park Plan

Along with a community focus, the park is meant to attract birds, offering shelter, water and plantings that serve this purpose. A fountain and a semi-circle pergola are central features on the east-west axis. Lined with benches, a pair of concentric walkways link a series of flower beds, hedges and lawns. Artist John Tagiuri contributed public art in the form of a waist-high, decorative, black metal fence of bird silhouettes, a project funded by the Edward Ingersoll Browne Trust Fund of the City of Boston.

Ramler Park officially opened in 2004. The park is now used to host events such as concerts and physical activity classes like yoga, and as a public green space for the residents of the area. Cared for by The Friends of Ramler Park, it's open to all residents and visitors. Events are scheduled in the spring and summer during the warm season. The park is open year-round.

Resources

<https://fenwaycivic.files.wordpress.com/2011/08/0626011302.jpg>

<http://friendsoframlerpark.org/about/history>



Park View



John Tagiuri Fence